

SILENT STEEL Model 280 Curtain Tracks - Curtain tracks (Model 2800) shall be of 14 gauge galvanized steel construction, entirely enclosed except for slot in bottom, each half to be in one continuous piece except where splicing clamps are required. Each curtain carrier (Model 2801) shall be spaced on 12" centers and shall be of nylon (or steel) construction supported from a ball-bearing by two polyethylene wheels held to ball-bearing by rustproof nickel plated rivet, such wheels rolling on two separate parallel treads. Each curtain carrier shall consist of a free-moving plated swivel and sufficient trim chain to accommodate curtain snap hook. Live-end pulley (Model 2803) and Dead-end pulley (Model 2804) blocks shall be adjustable and shall be equipped with 3" diameter sleeve-bearing wheels adequately guarded. A rubber bumper shall be attached to each curtain carrier to function as noise reducer. The manufacturer shall furnish two end stops (Model 2809) for placement at each track end and a tension floor pulley (Model 2865) for increasing cord tension. Stretch-resistant operating cord (Model 2828 for hand operation and Model 2829 for machine operation) shall have synthetic or wire center and shall be of 3/8", or 3/16" diameter. If Back-pack devices are used with this track Model 2833 is used for hand operated track systems and Model 2834 is used for machine operated track systems.
Model 280 as manufactured by Automatic Devices Company of Allentown, PA.

SILENT STEEL Model 281 Curtain Tracks - Curtain tracks (Model 2800) shall be of 14 gauge galvanized steel construction, entirely enclosed except for slot in bottom, each half to be in one continuous piece except where splicing clamps are required. Each curtain carrier (Model 2849) shall be spaced on 12" centers and shall be of steel construction with two neoprene-tired ball-bearing wheels held to steel body by rustproof nickel plated rivet, such wheels rolling on two separate parallel treads. Each curtain carrier shall consist of a free-moving plated swivel and sufficient trim chain to accommodate curtain snap hook. Live-end pulley (Model 2803) and Dead-end pulley (Model 2804) blocks shall be adjustable and shall be equipped with 3" diameter sleeve-bearing wheels adequately guarded. A rubber bumper shall be attached to each curtain carrier to function as noise reducer. The manufacturer shall furnish two end stops for placement at each track end and a tension floor pulley (Model 2865) for increasing cord tension. Stretch-resistant operating cord (Model 2828 for hand operation and Model 2829 for machine operation) shall have synthetic or wire center and shall be of 3/8", or 3/16" diameter. If Back-pack devices are used with this track Model 2833 is used for hand operated track systems and Model 2834 is used for machine operated track systems.

Model 280 as manufactured by Automatic Devices Company of Allentown, PA.

SILENT STEEL Model 282 Curtain Tracks - Curtain tracks (Model 2800) shall be of 14 gauge galvanized steel construction, entirely enclosed except for slot in bottom, each half to be in one continuous piece except where splicing clamps are required. Each curtain carrier (Model 2851) shall be spaced on 12" centers and shall be of steel construction with two nylon-tired ball-bearing wheels held to steel body by rustproof nickel plated rivet, such wheels rolling on two separate parallel treads. Each curtain carrier shall consist of a free-moving plated swivel and sufficient trim chain to accommodate curtain snap hook. Live-end pulley (Model 2863) and Dead-end pulley (Model 2864) blocks shall be adjustable and shall be equipped with 5" diameter sleeve-bearing wheels adequately guarded. A rubber bumper shall be attached to each curtain carrier to function as noise reducer. The manufacturer shall furnish two end stops for placement at each track end and a tension floor pulley (Model 2866) for increasing cord tension. Stretch-resistant operating cord (Model 2828 for hand operation and Model 2829 for machine operation) shall have synthetic or wire center and shall be of 3/8", or 3/16" diameter. If Back-pack devices are used with this track Model 2833 is used for hand operated track systems and Model 2834 is used for machine operated track systems.

Model 282 as manufactured by Automatic Devices Company of Allentown, PA.

SILENT STEEL Model 280-A Curtain Tracks - Curtain tracks (Model 2800) shall be of 14 gauge galvanized steel construction, entirely enclosed except for slot in bottom, each half to be in one continuous piece except where splicing clamps are required. Each curtain carrier (Model 2801-B) shall be spaced on 12" centers and shall be steel construction with two polyethylene wheels held to the steel body by a rustproof nickel plated rivet, such wheels rolling on two separate parallel treads. Each curtain carrier shall consist of a free-moving plated swivel and sufficient trim chain to accommodate curtain snap hook. Live-end pulley (Model 2803) and Dead-end pulley (Model 2804) blocks shall be adjustable and shall be equipped with 3" diameter sleeve-bearing wheels adequately guarded. A rubber bumper shall be attached to each curtain carrier to function as noise reducer. The manufacturer shall furnish two end stops (Model 2809) for placement at each track end and a tension floor pulley (Model 2865) for increasing cord tension. Stretch-resistant operating cord (Model 2828 for hand operation and Model 2829 for machine operation) shall have synthetic or wire center and shall be of 3/8", or 3/16" diameter. If Back-pack devices are used with this track Model 2833 is used for hand operated track systems and Model 2834 is used for machine operated track systems.

Model 280-A as manufactured by Automatic Devices Company of Allentown, PA.

SILENT STEEL Model 283-N Curtain Tracks - Curtain tracks (Model 2800) shall be of 14 gauge galvanized steel construction, entirely enclosed except for slot in bottom, each half to be in one continuous piece except where splicing clamps are required. Each curtain carrier (Model 2851) shall be spaced on 12"

centers and shall be of steel construction with two nylon-tired ball-bearing wheels held to steel body by rustproof nickel plated rivet, such wheels rolling on two separate parallel treads. Each curtain carrier shall consist of a free-moving plated swivel and sufficient trim chain to accommodate curtain snap hook. Live-end pulley (Model 2863-A) and Dead-end pulley (Model 2864-A) blocks shall be adjustable and shall be equipped with 8" diameter ball-bearing wheels adequately guarded. A rubber bumper shall be attached to each curtain carrier to function as noise reducer. The manufacturer shall furnish two end stops (Model 2809) for placement at each track end and a tension floor pulley (Model 2866-A) for increasing and decreasing cord tension. Stretch-resistant operating cord (Model 2830 for hand operation and Model 2829 for machine operation) shall have synthetic or wire center and shall be of 1/2", or 3/16" diameter. If Back-pack devices are used with this track Model 2833-A is used for hand operated track systems and Model 2834 is used for machine operated track systems.

Model 283-N as manufactured by Automatic Devices Company of Allentown, PA.

SILENT STEEL Model 283-R Curtain Tracks - Curtain tracks (Model 2800) shall be of 14 gauge galvanized steel construction, entirely enclosed except for slot in bottom, each half to be in one continuous piece except where splicing clamps are required. Each curtain carrier (Model 2849) shall be spaced on 12" centers and shall be of steel construction with two neoprene-tired ball-bearing wheels held to steel body by rustproof nickel plated rivet, such wheels rolling on two separate parallel treads. Each curtain carrier shall consist of a free-moving plated swivel and sufficient trim chain to accommodate curtain snap hook. Live-end pulley (Model 2863-A) and Dead-end pulley (Model 2864-A) blocks shall be adjustable and shall be equipped with 8" diameter ball-bearing wheels adequately guarded. A rubber bumper shall be attached to each curtain carrier to function as noise reducer. The manufacturer shall furnish two end stops (Model 2809) for placement at each track end and a tension floor pulley (Model 2866-A) for increasing and decreasing cord tension. Stretch-resistant operating cord (Model 2830 for hand operation and Model 2829 for machine operation) shall have synthetic or wire center and shall be of 1/2", or 3/16" diameter. If Back-pack devices are used with this track Model 2833-A is used for hand operated track systems and Model 2834 is used for machine operated track systems.

Model 283-R as manufactured by Automatic Devices Company of Allentown, PA.

SILENT STEEL Model 284 Curtain Tracks (Walk along track system) - Curtain tracks (Model 2800) shall be of 14 gauge galvanized steel construction, entirely enclosed except for slot in bottom, each half to be in one continuous piece except where splicing clamps are required. Each curtain carrier (Model 2801) shall be spaced on 12" centers and shall be of nylon construction supported from a ball-bearing by two polyethylene wheels held to ball-bearing by rustproof nickel plated rivet, such wheels rolling on two separate parallel treads. Each curtain carrier shall consist of a free-moving plated swivel and sufficient

trim chain to accommodate curtain snap hook. A rubber bumper shall be attached to each curtain carrier to function as noise reducer. The manufacturer shall furnish four end stops (Model 2809) for placement at each track end. This model track system is for walk-along operation only and does not include pulleys or other operating hardware.

Model 284 as manufactured by Automatic Devices Company of Allentown, PA.

SILENT STEEL Model 284-N Curtain Tracks (Walk along track system) -

Curtain tracks (Model 2800) shall be of 14 gauge galvanized steel construction, entirely enclosed except for slot in bottom, each half to be in one continuous piece except where splicing clamps are required. Each curtain carrier (Model 2851) shall be spaced on 12" centers and shall be of steel construction supported from a ball-bearing by two nylon-tired ball-bearing wheels held to carrier body by rustproof nickel plated rivet, such wheels rolling on two separate parallel treads. Each curtain carrier shall consist of a free-moving plated swivel and sufficient trim chain to accommodate curtain snap hook. The manufacturer shall furnish four end stops (Model 2809) for placement at each track end. This model track system is for walk-along operation only and does not include pulleys or other operating hardware.

Model 284-N as manufactured by Automatic Devices Company of Allentown, PA.

SILENT STEEL Model 284-R Curtain Tracks (Walk along track system) -

Curtain tracks (Model 2800) shall be of 14 gauge galvanized steel construction, entirely enclosed except for slot in bottom, each half to be in one continuous piece except where splicing clamps are required. Each curtain carrier (Model 2849) shall be spaced on 12" centers and shall be of steel construction supported from a ball-bearing by two neoprene-tired ball-bearing wheels held to carrier body by rustproof nickel plated rivet, such wheels rolling on two separate parallel treads. Each curtain carrier shall consist of a free-moving plated swivel and sufficient trim chain to accommodate curtain snap hook. The manufacturer shall furnish four end stops (Model 2809) for placement at each track end. This model track system is for walk-along operation only and does not include pulleys or other operating hardware.

Model 284-R as manufactured by Automatic Devices Company of Allentown, PA.

SILENT STEEL Model 380 Black Curtain Tracks - Curtain tracks (Model 2800ABL) shall be of 12-gauge aluminum construction, anodized black, entirely enclosed except for slot in bottom. Each half shall be in one continuous piece except where splicing clamps are required. Each curtain carrier (Model 2801BL) shall be spaced on 12" centers and shall be of black nylon (or steel) construction supported from a ball-bearing by two polyethylene wheels held to ball-bearing by rustproof nickel plated rivet, such wheels rolling on two separate parallel treads. Each curtain carrier shall consist of a free-moving black swivel and sufficient black trim chain to accommodate curtain snap hook. Live-end pulley (Model 2803BL) and Dead-end pulley (Model 2804BL) blocks shall be adjustable and shall be equipped with 3" diameter sleeve-bearing wheels adequately guarded. A rubber bumper shall be attached to each curtain carrier to function as noise reducer. The manufacturer shall furnish two black end stops (Model 2809BL) for placement at each track end and a black tension floor pulley (Model 2865BL) for increasing cord tension. Stretch-resistant operating cord (Model 2828 for hand operation and Model 3529 for machine operation) shall have synthetic or wire-center and shall be of 3/8", or 3/16" diameter. If black Back-pack devices are used with this track Model 2833BL is used for hand operated track systems and Model 2834BL is used for machine operated track systems.
Model 380 as manufactured by Automatic Devices Company of Allentown, PA.

SILENT STEEL Model 381 Black Curtain Tracks - Curtain tracks (Model 2800ABL) shall be of 12-gauge aluminum construction, anodized black, entirely enclosed except for slot in bottom. Each half shall be in one continuous piece except where splicing clamps are required. Each curtain carrier (Model 2849BL) shall be spaced on 12" centers and shall be of black steel construction with two neoprene-tired ball-bearing wheels held to steel body by rustproof nickel plated rivet, such wheels rolling on two separate parallel treads. Each curtain carrier shall consist of a free-moving black swivel and sufficient black trim chain to accommodate curtain snap hook. Live-end pulley (Model 2803BL) and Dead-end pulley (Model 2804BL) blocks shall be adjustable and shall be equipped with 3" diameter sleeve-bearing wheels adequately guarded. A rubber bumper shall be attached to each curtain carrier to function as noise reducer. The manufacturer shall furnish two black end stops (Model 2809BL) for placement at each track end and a black tension floor pulley (Model 2865BL) for increasing cord tension. Stretch-resistant operating cord (Model 2828 for hand operation and Model 3529 for machine operation) shall have synthetic or wire center and shall be of 3/8", or 3/16" diameter. If black Back-pack devices are used with this track Model 2833BL is used for hand operated track systems and Model 2834BL is used for machine operated track systems.
Model 381 as manufactured by Automatic Devices Company of Allentown, PA.

SILENT STEEL Model 382 Black Curtain Tracks - Curtain tracks (Model 2800ABL) shall be of 12-gauge aluminum construction, anodized black, entirely enclosed except for slot in bottom. Each half shall be in one continuous piece except where splicing clamps are required. Each curtain carrier (Model 2851BL) shall be spaced on 12" centers and shall be of black steel construction with two nylon-tired ball-bearing wheels held to steel body by rustproof nickel plated rivet, such wheels rolling on two separate parallel treads. Each curtain carrier shall consist of a free-moving black swivel and sufficient black trim chain to accommodate curtain snap hook. Live-end pulley (Model 2863BL) and Dead-end pulley (Model 2864BL) blocks shall be adjustable and shall be equipped with 5" diameter sleeve-bearing wheels adequately guarded. A rubber bumper shall be attached to each curtain carrier to function as noise reducer. The manufacturer shall furnish two black end stops (2809BL) for placement at each track end and a black tension floor pulley (Model 2866BL) for increasing cord tension. Stretch-resistant operating cord (Model 2828 for hand operation and Model 3529 for machine operation) shall have synthetic or wire center and shall be of 3/8", or 3/16" diameter. If black Back-pack devices are used with this track Model 2833BL is used for hand operated track systems and Model 2834BL is used for machine operated track systems.

Model 382 as manufactured by Automatic Devices Company of Allentown, PA.

SILENT STEEL Model 380-A Black Curtain Tracks - Curtain tracks (Model 2800ABL) shall be of 12-gauge aluminum construction, anodized black, entirely enclosed except for slot in bottom. Each half shall be in one continuous piece except where splicing clamps are required. Each curtain carrier (Model 2801-BBL) shall be spaced on 12" centers and shall be steel construction with two polyethylene wheels held to the steel body by a rustproof nickel plated rivet, such wheels rolling on two separate parallel treads. Each curtain carrier shall consist of a free-moving plated swivel and sufficient trim chain to accommodate curtain snap hook. Live-end pulley (Model 2803BL) and Dead-end pulley (Model 2804BL) blocks shall be adjustable and shall be equipped with 3" diameter sleeve-bearing wheels adequately guarded. A rubber bumper shall be attached to each curtain carrier to function as noise reducer. The manufacturer shall furnish two black end stops (Model 2809BL) for placement at each track end and a black tension floor pulley (Model 2865BL) for increasing cord tension. Stretch-resistant operating cord (Model 2828 for hand operation and Model 3529 for machine operation) shall have synthetic or wire-center and shall be of 3/8", or 3/16" diameter. If black Back-pack devices are used with this track Model 2833BL is used for hand operated track systems and Model 2834BL is used for machine operated track systems.

Model 380-A as manufactured by Automatic Devices Company of Allentown, PA.

SILENT STEEL Model 383-N Black Curtain Tracks - Curtain tracks (Model 2800ABL) shall be of 12-gauge aluminum construction, anodized black, entirely enclosed except for slot in bottom. Each half shall be in one continuous piece except where splicing clamps are required. Each curtain carrier (Model 2851BL) shall be spaced on 12" centers and shall be of black steel construction with two nylon-tired ball-bearing wheels held to steel body by rustproof nickel plated rivet, such wheels rolling on two separate parallel treads. Each curtain carrier shall consist of a free-moving plated swivel and sufficient trim chain to accommodate curtain snap hook. Black live-end pulley (Model 2863-A) and Dead-end pulley (Model 2864-A) blocks shall be adjustable and shall be equipped with 8" diameter ball-bearing wheels adequately guarded. A rubber bumper shall be attached to each curtain carrier to function as noise reducer. The manufacturer shall furnish two black end stops (Model 2809BL) for placement at each track end and a black tension floor pulley (Model 2866-A) for increasing and decreasing cord tension. Stretch-resistant operating cord (Model 2830 for hand operation and Model 3529 for machine operation) shall have synthetic or wire center and shall be of 1/2", or 3/16" diameter. If black Back-pack devices are used with this track Model 2833-ABL is used for hand operated track systems and Model 2834BL is used for machine operated track systems.

Model 383-N as manufactured by Automatic Devices Company of Allentown, PA.

SILENT STEEL Model 383-R Black Curtain Tracks – Curtain tracks (Model 2800ABL) shall be of 12-gauge aluminum construction, anodized black, entirely enclosed except for slot in bottom. Each half shall be in one continuous piece except where splicing clamps are required. Each curtain carrier (Model 2849BL) shall be spaced on 12" centers and shall be of black steel construction with two neoprene-tired ball-bearing wheels held to steel body by rustproof nickel plated rivet, such wheels rolling on two separate parallel treads. Each curtain carrier shall consist of a free-moving plated swivel and sufficient trim chain to accommodate curtain snap hook. Black Live-end pulley (Model 2863-A) and Dead-end pulley (Model 2864-A) blocks shall be adjustable and shall be equipped with 8" diameter ball-bearing wheels adequately guarded. A rubber bumper shall be attached to each curtain carrier to function as noise reducer. The manufacturer shall furnish two black end stops (Model 2809BL) for placement at each track end and a black tension floor pulley (Model 2866-A) for increasing and decreasing cord tension. Stretch-resistant operating cord (Model 2830 for hand operation and Model 3529 for machine operation) shall have synthetic or wire center and shall be of 1/2", or 3/16" diameter. If black Back-pack devices are used with this track Model 2833-ABL is used for hand operated track systems and Model 2834BL is used for machine operated track systems.

Model 383-R as manufactured by Automatic Devices Company of Allentown, PA.

SILENT STEEL Model 384 Black Curtain Tracks (Walk along track system) -

Curtain tracks (Model 2800ABL) shall be of 12-gauge aluminum construction, anodized black entirely enclosed except for slot in bottom. Each half shall be in one continuous piece except where splicing clamps are required. Each curtain carrier (Model 2801BL) shall be spaced on 12" centers and shall be of black nylon construction supported from a ball-bearing by two polyethylene wheels held to ball-bearing by rustproof nickel plated rivet, such wheels rolling on two separate parallel treads. Each curtain carrier shall consist of a free-moving plated swivel and sufficient trim chain to accommodate curtain snap hook. A rubber bumper shall be attached to each curtain carrier to function as noise reducer. The manufacturer shall furnish four black end stops (Model 2809BL) for placement at each track end. This model track system is for walk-along operation only and does not include pulleys or other operating hardware.

Model 384 as manufactured by Automatic Devices Company of Allentown, PA.

SILENT STEEL Model 384-N Black Curtain Tracks (Walk along track system) -

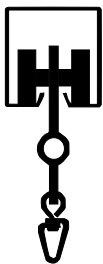
Curtain tracks (Model 2800ABL) shall be of 12-gauge aluminum construction, anodized black entirely enclosed except for slot in bottom. Each half shall be in one continuous piece except where splicing clamps are required. Each curtain carrier (Model 2851BL) shall be spaced on 12" centers and shall be of black steel construction supported from a ball-bearing by two nylon-tired ball-bearing wheels held to carrier body by rustproof nickel plated rivet, such wheels rolling on two separate parallel treads. Each curtain carrier shall consist of a free-moving plated swivel and sufficient trim chain to accommodate curtain snap hook. The manufacturer shall furnish four black end stops (Model 2809BL) for placement at each track end. This model track system is for walk-along operation only and does not include pulleys or other operating hardware.

Model 384-N as manufactured by Automatic Devices Company of Allentown, PA.

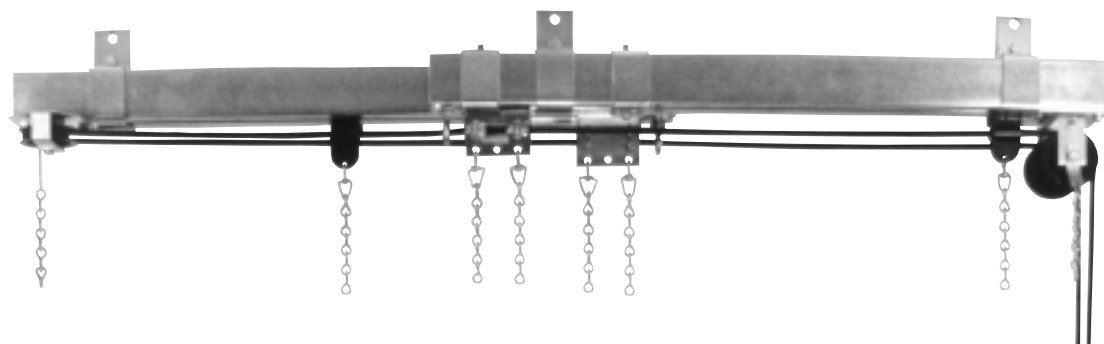
SILENT STEEL Model 384-R Black Curtain Tracks (Walk along track system) -

Curtain tracks (Model 2800ABL) shall be of 12-gauge aluminum construction, anodized black entirely enclosed except for slot in bottom. Each half shall be in one continuous piece except where splicing clamps are required. Each curtain carrier (Model 2849BL) shall be spaced on 12" centers and shall be of black steel construction supported from a ball-bearing by two neoprene-tired ball-bearing wheels held to carrier body by rustproof nickel plated rivet, such wheels rolling on two separate parallel treads. Each curtain carrier shall consist of a free-moving plated swivel and sufficient trim chain to accommodate curtain snap hook. The manufacturer shall furnish four black end stops (Model 2809BL) for placement at each track end. This model track system is for walk-along operation only and does not include pulleys or other operating hardware.

Model 384-R as manufactured by Automatic Devices Company of Allentown, PA.



SILENT STEEL® 280 SERIES CURTAIN TRACKS



Model 280 Assembly

SILENT STEEL® MODEL 280

SILENT STEEL is the most famous name in heavy duty stage tracks. The Model 280 steel unit is used on the majority of stage installations with heavy weight curtains of any length and is particularly quiet in operation.

Models 281 and 282 are for use with especially heavy curtains. They are essentially identical to Model 280 except neoprene-tired ball-bearing carriers are supplied with Model 281 while larger diameter floor and end pulleys and heavy duty nylon-tired ball-bearing carriers are furnished with Model 282.

280 Series tracks cannot be curved.

MODEL 281

Model 281 features quiet and smooth operating No. 2849 Neoprene Ball-Bearing Single Carriers and No. 2850 Neoprene Ball-Bearing Master Carriers. No.2827 Rubber Spacers are used to reduce noise even further. With Model 281 Back-Pack tracks No. 2826 and No. 2827 Rubber Spacers are used.

MODEL 282

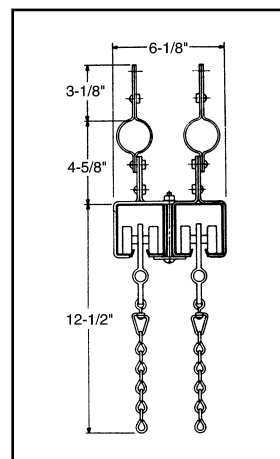
Model 282 features No. 2851 Nylon Ball-Bearing Single Carriers and No. 2852 Nylon Ball-Bearing Master Carriers. No. 2827 Rubber Spacer is used instead of No. 2825. No. 2863 5" Live End Pulley, No. 2864 5" Dead End Pulley and No. 2866 5" Adjustable Floor Pulley help in easing the operation of heavy curtains. With Model 282 Back-Pack tracks No.2826 and No. 2827 Rubber Spacers are used.

MODEL 280-A

Model 280-A is identical to Model 280 except No. 2801-B Single Carriers (with plated steel block) are used instead of the nylon blocked No. 2801.

Cross Section of Track at Center Overlap

Min. pocket width: 7 in.



MODELS 283-N and 283-R

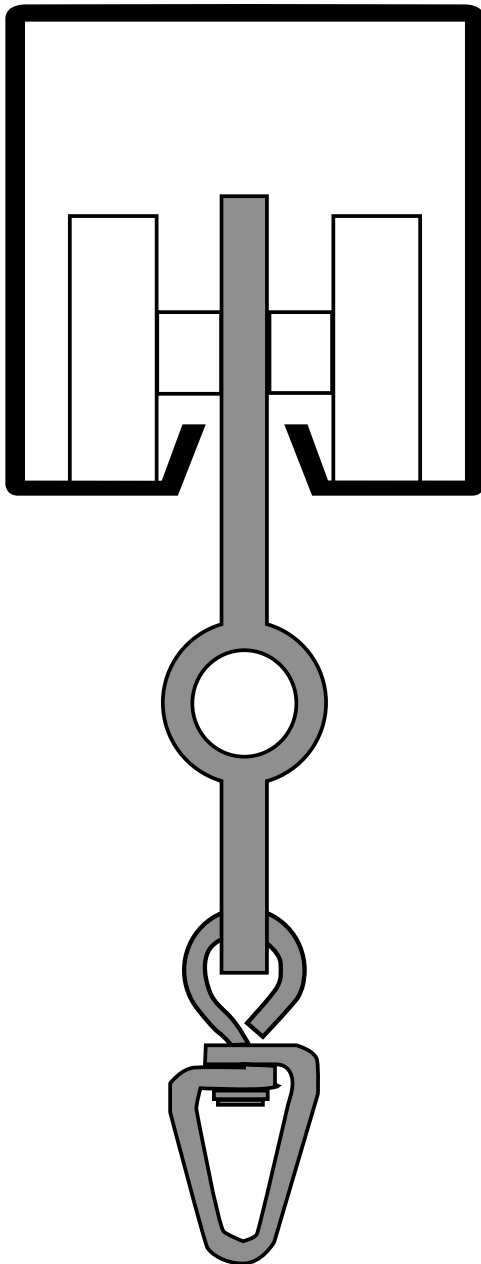
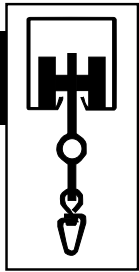
Model 283-N and Model 283-R employ No.2863-A 8" Live End Pulleys, No. 2864-A 8" Dead End Pulleys and No. 2866-A 8" Adjustable Floor Pulley which combined with the No. 2830 1/2" Sash Cord reduce operating effort on systems with extra heavy curtains. The difference between Model 283-N and 283-R is as follows: Model 283-N: No. 2851 Nylon Ball-Bearing Single Carriers and No. 2852 Nylon Ball-Bearing Master Carriers are used. Model 283-R: No. 2849 Neoprene Ball-Bearing Single Carriers and No. 2850 Neoprene Ball-Bearing Master Carriers.

Model 284, 284-N, and 284-R

Model 284, 284-N, and 284-R are for walk-along operation only and are provided with no pulleys or operating cord. The difference between Model 284-N and 284-R is as follows: Model 284 employs 2801 single and 2802 master carriers.

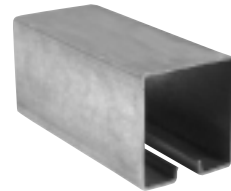
Model 284-N: No. 2851 Nylon Ball-Bearing Single Carriers and No. 2852 Nylon Ball-Bearing Master Carriers are used. Model 284-R: No. 2849 Neoprene Ball-Bearing Single Carriers and No. 2850 Neoprene Ball-Bearing Master Carriers are used.

NOTE: Component parts also available in black. Designated by [BL] after part number.



Full Size End View

(NOTE: TRIM CHAIN NOT SHOWN)



No. 2800 Channel

1' - 2 lbs. 12 oz.

No. 2800-A Channel

1' - 15 oz.

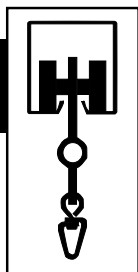
14 gauge galvanized steel. (No. 2800-A supplied in 12 gauge aluminum for light weight use only.) Obtainable in unspliced lengths up to 26'. Holes can be drilled for direct ceiling attachment. Approximately: 2-5/8" wide x 2-3/4" high.



No. 2801 Single Carrier (2801-BL)

1 - 3-1/2 oz.

Carrier spacing: 12". Block constructed of nylon material supported from ball-bearing with 2 heavy duty polyethylene wheels. Plated swivel for free, effortless curtain movement. Trim chain supplied for curtain trimming. Combined carrier and bumper width: Approximately 2". Length from bottom of track to bottom of 5 chain links: Approximately 9-1/4".

**No. 2801-A Single Carrier**

1 - 7 oz.

Carrier spacing: 12". Block constructed of plated steel supported from ball-bearing with 2 heavy duty polyethylene wheels. Plated swivel for free, effortless curtain movement. Trim chain supplied for curtain trimming. Gate precludes need for removing and rethreading operating cord. Combined carrier and bumper width: Approximately 2". Length from bottom of track to bottom of 5 chain links: Approximately 9-1/4". Plated steel block.

**No. 2801-B Single Carrier [2801-BBL]**

1 - 7 oz.

Carrier spacing: 12". Block constructed of plated steel supported from ball-bearing with 2 heavy duty polyethylene wheels. Plated swivel for free, effortless curtain movement. Trim chain supplied for curtain trimming. Combined carrier and bumper width: Approximately 2". Length from bottom of track to bottom of 5 chain links: Approximately 9-1/4" high. Similar to No. 2801 except equipped with plated steel block.

**No. 2802 Master Carrier [2802-BL]**

1 - 14 oz.

Block constructed of plated steel supported from 2 ball-bearings with 4 heavy duty polyethylene wheels and 2 cable clips which clamp cord to carrier. Carrier width: Approximately 3-1/2". Length from bottom of track to bottom of 5 chain links: Approximately 9-1/4" high.

**No. 2803 Live End Pulley [2803-BL]**

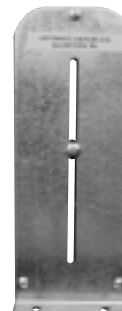
1 - 3 lbs.

Equipped with 2 oil-impregnated sleeve-bearing nylon wheels. Steel block anchorable to any position under track without drilling. Pulley width: Approximately 4".

**No. 2804 Dead End Pulley [2804-BL]**

1 - 1 lb. 14 oz.

Equipped with 1 oil-impregnated sleeve-bearing nylon wheel. Same type adjustment block as Live End. Pulley width: Approximately 4".

**No. 2805 Adjustable Floor Pulley [2805-BL]**

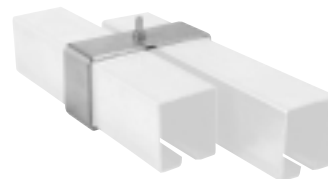
1 - 3 lbs. 5 oz.

Equipped with 1 oil-impregnated sleeve-bearing nylon wheel. Adjustment - 9". Approximately: 3-1/4" long x 5" wide x 13" high.

**No. 2806 Floor Pulley**

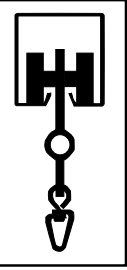
1 - 2 lbs. 13 oz.

Non-adjustable type with 1 oil-impregnated sleeve-bearing nylon wheel.

**No. 2807 Lap Clamp [2807-BL]**

1 - 1 lb. 6 oz.

For attaching double-sectioned track at center overlap. NOTE: For use with suspended tracks only.



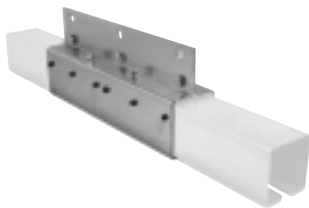
No. 2808 Hanging Clamp (2808-BL)

1 pr. - 15 oz.
Recommended spacing: 7 ft. Steel, chain or cable suggested for track suspension. Adjustable to any location on the track. Pipe battens and turnbuckles recommended for long and heavy curtain installations. Sold in pairs.



No. 2809 End Stop (2809-BL)

1 - 4 oz.
Prevents carriers from moving beyond selected position in track. Not to be used with Rotodrapers. Use bolt and nut through sides of track with Rotodrapers.



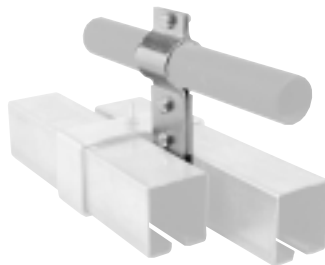
No. 2824 Suspended Splicing Clamp (2824-BL)

1 pr. - 6 lbs. 4 oz.
Two piece 11 gauge clamp for joining and extending track sections assuring proper alignment of track channels. Approximately 12" long x 2-3/4" wide x 5-1/2" high.
NOTE: For suspended tracks only.



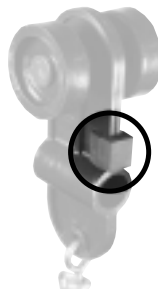
No. 2824-A Ceiling Splicing Clamp (2824-ABL)

1 pr. - 6 lbs. 4 oz.
Two piece 11 gauge clamp for joining track sections assuring proper alignment of track channels. Approximately: 12" long x 7/8" wide x 2-13/16" high.
NOTE: For ceiling mounted tracks only.



No. CPS-1 Center Pipe Support

1 pr - 14 oz.
To facilitate the clamping of steel track channel to pipe batten, a Center Pipe Support is available. The Center Pipe Support is placed at the overlap and the two lap clamps are used in the normal manner.



No. 2825 Rubber Bumper

9 - 1 oz.
Attachment to No. 2801 Single Carriers. Function as noise reducer. Not used with Back-Pack guides.



No. 2826 Rubber Spacer

8 - 1 oz.



No. 2827 Rubber Spacer

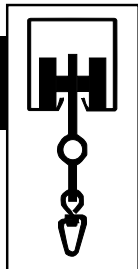
6 - 1 oz.



No. 2827-A Rubber Spacer

10 - 1 oz.

For use with Back-Pack guides to provide quieter operation. No.2826 (1/8") inserted between carrier and attached Back-Pack Guide.No. 2827 (7/16") inserted on other side of Back-Pack Guide and between master carrier and adjoining single carrier; also used with Nos. 2849, 2850, 2851, and 2852 carriers. No. 2827-A is used with Model 283-N and Model 283-R tracks. 5/8" hole.

**No. 2828 Cord**

100' - 5 lbs. 7 oz.
Synthetic center and stretch-resistant. For manually-operated 280, 281, 282 tracks. 3/8" (No. 12)

**No. 2829 Cable**

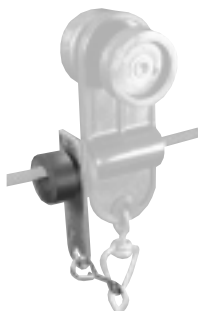
100' - 2 lbs. 15 oz.
Wire center. Used with machine-operated track systems. 1/4" (No. 8)

**No. 3529 Cable**

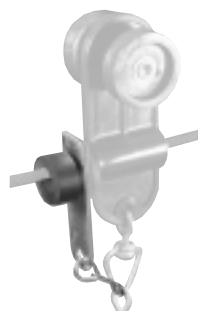
100' - 2 lbs. 7 oz.
Wire center with woven polyester cover. Used with drum-drive machines. 3/16" (No. 6)

**No. 2830 Cord**

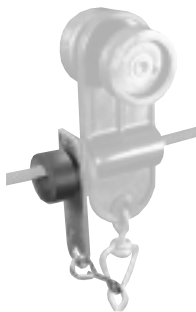
100' - 6 lbs. 2 oz.
Synthetic center and stretch resistant. For manually operated Model 283-N and Model 283-R tracks. 1/2" (No. 14)

**No. 2833 Back-Pack Guide®**

1 - 1 oz.
Provides sliding door effect. Prevents curtain from accumulating in gathers until track ends are reached. Thickness 1/8"

**No. 2834 Back-Pack Guide® (2834-BL)**

1 - 1 oz.
For machine-operated tracks, has smaller hole. Prevents curtain from accumulating in gathers until track ends are reached. Thickness 1/8"

**No. 2833-R Back-Pack Guide®**

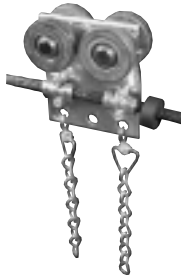
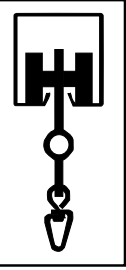
Used with Model 283-N and Model 283-R for manually operated tracks. Has large hole for No. 2830 Cord. Thickness 1/8"

**No. 2848 Space Saver**

2 - 1 oz.
For reducing curtain stacking area. Used in place of carrier. Recommended spacing: no more than 1 between two carriers at end pulley area only. 3/16" thickness. Not used with Model 283-N and Model 283-R manually operated tracks. Total quantity should not exceed 10% of curtain width. (Example: 40' curtain would use 2 per side).

**No. 2849 Neoprene Ball-Bearing Single Carrier (2849-BL)**

1 - 11 oz.
Block constructed of plated steel supported from 2 sealed and greased neoprene-tired ball-bearing wheels capable of supporting up to 30 lbs. per carrier providing nearly silent and easier operation. No. 2827 Rubber Spacer must be inserted between each carrier. Used with Model 281 & 283-R. Approximately: 9-1/4" high including trim chain.



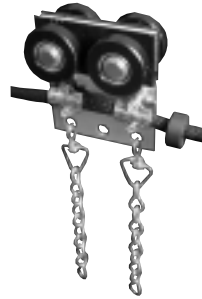
No. 2850 Neoprene Ball-Bearing Master Carrier (2850-BL)

1 - 1 lb. 8 oz.
Block constructed of plated steel supported from 4 sealed and greased neoprene tired ball-bearing wheels. Used with Model 281.
Approximately: 9-1/4" high including trim chain.



No. 2851 Nylon Ball-Bearing Single Carrier (2851-BL)

1 - 10 oz.
Block constructed of plated steel supported from 2 nylon-tired ball-bearing wheels capable of supporting up to 50 lbs. per carrier. Provides longer service and easier pull. Used with Model 282 & 283-N.
Approximately: 9-1/4" high including trim chain.



No. 2852 Nylon Ball-Bearing Master Carrier (2852-BL)

1 - 1 lb. 4 oz.
Block constructed of plated steel supported from 4 sealed and greased nylon tired ball-bearing wheels. Used with Model 282 & 283-N.
Approximately: 9-1/4" high including trim chain.



No. 2863 5" Live End Pulley (2863-BL)

1 - 6 lbs. 4 oz.
Painted steel construction equipped with two 5" diameter glass filled nylon ball-bearing wheels. Used with Model 282.



No. 2864 5" Dead End Pulley (2864-BL)

1 - 4 lbs. 10 oz.
Painted steel construction equipped with one 5" diameter glass filled nylon ball-bearing wheel. Used with Model 282.



No. 2863-A 8" Live End Pulley

1 - 15 lbs. 4 oz.
Painted steel construction equipped with two ball-bearing 8" diameter nylatron wheels. Used with Model 283-N and Model 283-R.



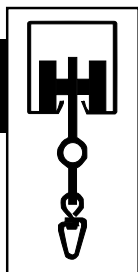
No. 2864-A 8" Dead End Pulley

1-10 lbs.
Painted steel construction with single 8" diameter ball-bearing nylatron wheel. Used with Model 283-N and Model 283-R.



No. 2803-F Flying Live End Pulley

1 - 4 lbs.
Used with flying type curtain machines to route the cable 180 degrees, back over the track to the track-attached machine.

**No. 2803-B Center Take Off Pulley**

1 – 5 lbs. 12 oz.

Used to route the operating cables perpendicular to the track. Must be located a minimum of 8' from the end of the track. Add 1 each 2804 Dead End Pulley to system when this device is used.

NOTE: Additional pulleys may be required to mule operating line.

**No. 2839 Overlapping Master Carrier**

1 – 3 lbs.

Used with single section tracks to create a fixed 12" center overlap (6" in front of 6"). Approximately: 15-1/2" long x 2" wide x 9" high (including trim chain not shown).

**No. 2861 Door Carrier**

1 – 28 oz.

1 - 4" long x 1-3/4" wide x 6-3/8" high (to base of plate) Constructed of 4 nylon tired ball-bearing wheels mounted to plated steel body. Adjustable design permits leveling of door height without removing door from carrier. Rated for 100 pound load on properly supported track.

**No. 2814 Pipe Clamp**

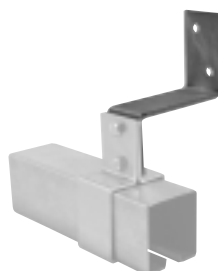
for 1-1/4" I.D. Schedule 40 pipe
(1 pr. - 13 oz.)

**No. 2815 Pipe Clamp**

for 1-1/2" I.D. Schedule 40 pipe
(1 pr. - 14 oz.)

**No. 2816 Pipe Clamp**

for 2" I.D. Schedule 40 pipe
(1 pr. - 18 oz.)

**No. 2821 Pocket Bracket**

4-1/2" long x 2" wide x 5-3/8" high
(1 - 1lb.)

**No. 2822 Pocket Bracket**

1- 3/4" long x 2" wide x 5-5/8" high
(1 - 11-1/2 oz.)

NOTE: If using pocket mounting brackets, both 2821 & 2822 pocket brackets must be used.

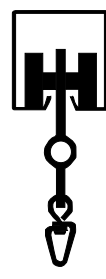
NOTE: These brackets are not designed for wall mounted track systems. They do not project enough to allow the curtain to stack without rubbing against wall.

**No. 2823 Ceiling Bracket**

(1 - 12-1/2 oz.)

Ceiling Bracket used when it is not possible to drill through track and attach directly to ceiling.

Approximately: 5-1/4" long x 2" wide x 2-3/4" high.

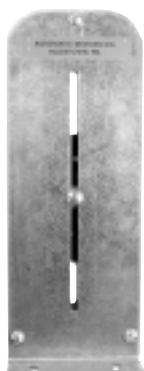


No. 2865 Tension Floor Pulley [2865-BL]

1 - 2 lbs.

Equipped with 1 oil-impregnated sleeve bearing nylon wheel. Tension spring provides cord tautness. Can be either wall or floor mounted. Spring-loaded latch maintains wheel in uppermost position during cording.

Approximately: 1-1/2" long x 3-1/2" wide x 13" high.



No. 2866 5" Adjustable Floor Pulley

1 - 5-1/2 lbs.

For manual operation. Equipped with one 5" diameter glass-filled nylon ball-bearing wheel. Adjustment - 7". Approximately: 3" long x 5-1/2" wide x 13" high. Used with Model 282.



No. 2866-A 8" Adjustable Floor Pulley

1 - 12 lbs. 4 oz.

Equipped with one ball-bearing 8" diameter nylatron wheel. Adjustment - 8". Approximately: 4" long x 8" wide x 20" high. Used with Model 283-N and Model 283-R.

Need a Flexible Leg Curtain for your Stage?

Consider using the Model 28 Rotodrapeer®



For more information on the Model 28 and 28-A Rotodrapers®, please see page 75.

Machine Operators:

When considering a machine operator for large 280 track systems consider the "TV" series of draw machines. These machines feature:

- Accelerated starts to minimize curtain sway and cable slack.
- Decelerated stops to minimize curtain sway and cable slack.
- Variable speed to allow a user definable final run speed for the curtain.
- Low voltage control to allow connection to most automation systems.
- Frequency drive controls to provide precise control.

See the Curtain Machine Selector Guide for the page number of various "TV" machine models.



INSTALLATION INSTRUCTIONS FOR MACHINE OPERATED MODELS: 280, 281, 282, 280-A, 283-N, 283-R TRACK SYSTEMS

I. SUSPENDED INSTALLATIONS

1. Lay the two track halves on the floor with the track slot facing down and with the amount of center overlap desired for final installation. If splicing is required, it should be done at this time. Splicing instructions can be found below. Attach the two lap clamps to the tracks at the overlap with the hardware provided.
2. Install the live-end and dead-end pulleys to the end of the tracks and secure with the hardware provided.
3. Secure the hanging clamps along the track sections at maximum 7' intervals. Raise the track to its permanent position and secure in place. Mount the curtain machine to the floor directly under the track live end pulley. Make sure that the drum of the machine is aligned with the live end pulleys and that the cords will be able to attach to the drum without crossing or rubbing.
4. Insert an equal amount of single carriers into each section of track. The carriers can be inserted at the open track ends located at the center overlap. Insert the master carriers into the track sections. Install the eye-bolt end stops to the open track ends at the overlap and secure.
5. Thread one end of the operating cable through one wheel of the live-end pulley, through the holes of the single carrier bodies, the cord connectors of the first master carrier and the eye-bolt of the end stop. Continue the cord around the dead-end pulley and through the holes of the single carrier bodies of the other half of track, through the cord connectors of the second master carrier and through the second wheel of the live end pulley and to the floor. At this point you should have 2 coils of wire cable on the floor below the live end pulley. Refer to ADC form 745-A for further instructions on cord attachment to the grooved cable drum.
6. Snap one rubber spacer on the inside edge (edge facing the master carrier) of each single carrier, just above the cord hole.
7. With the operating cable attached to the curtain machine drum as per form 745-A, move the master carriers an equal distance from the pulley ends of their track sections. Remove the slack from the cord at the master carrier with the free ends of cord and secure the cord at both masters with the cord connectors provided.

IMPORTANT NOTES

- ◆ Never use less than five suspension points. The track should be supported at its ends.
- ◆ Support the live end pulley to the overhead structure using the hole provided on the pulley.
- ◆ Support media should be chain, steel members, or wire cable. **Never use rope.**
- ◆ One-way operating curtains require only one master carrier and do not have an overlap. The rest of the rigging procedure and hardware is the same as with a center opening, bi-part curtain.

I. CEILING INSTALLATIONS

Because ceiling mounted tracks do not provide the opportunity for vertical adjustment, it is very important that the ceiling structure be level. Any deviation can cause the space between the bottom of the curtain and the floor surface to be uneven. Shims or blocking may be required for this purpose.

Hanging clamps and lap clamps are not needed or provided for ceiling mounted track systems. The top of the track channel should be drilled every 18" for direct attachment to the ceiling structure. The track channel should be properly secured before inserting any accessories.

1. Install the live-end and dead-end pulleys to the end of the tracks and secure with the hardware provided.
2. Raise the track to its permanent position and secure in place. Be sure to overlap the tracks at the center in order to provide the necessary center overlap for the curtain. If splice clamps are required install them to the track sections as per splicing instructions and notes below. Mount the floor pulley to the floor directly under and aligned with the track live end pulley.
3. Insert an equal amount of single carriers into each section of track. The carriers can be inserted at the open track ends located at the center overlap. Insert the master carriers into the track sections. Install the eyebolt end stops to the open track ends at the overlap and secure.
4. Thread one end of the operating cable through one wheel of the live-end pulley, through the holes of the single carrier bodies, the cord connectors of the first master carrier and the eye-bolt of the end stop. Continue the cord around the dead-end pulley and through the holes of the single carrier bodies of the other half of track, through the cord connectors of the second master carrier and through the second wheel of the live end pulley and to the floor. At this point you should have 2 coils of wire cable on the floor below the live end pulley. Refer to ADC form 745-A for further instructions on cord attachment to the grooved cable drum.
5. Snap one rubber spacer on the inside edge (edge facing the master carrier) of each single

carrier, just above the cord hole.

6. With the operating cable attached to the curtain machine drum as per form 745-A, move the master carriers an equal distance from the pulley ends of their track sections. Remove the slack from the cord at the master carrier with the free ends of cord and secure the cord at both masters with the cord connectors provided.

IMPORTANT SPLICING INFORMATION

CEILING MOUNTED TRACK: Place splicing clamps on track and align holes in splicing clamps with factory drilled and tapped holes of the track channel. Insert twelve 1/4-20 by 5/16" long stove bolts through holes in sides of splice clamps and tighten securely into tapped holes in track channels. Refer to ADC drawing number P-2824-A2 for additional information.

SUSPENDED TRACK: Follow the instructions as given on ADC drawing number A2824A. Adjust the setscrews so that the walls and center opening of track channels are in alignment for proper operation.

**INSTALLATION INSTRUCTIONS FOR HAND OPERATED SILENT STEEL
ADC HEAVY DUTY CURTAIN TRACK
MODELS: 280, 281, 282, 280-A, 283-N, 283-R**

I. SUSPENDED INSTALLATIONS

1. Lay the two track halves on the floor with the track slot facing down and with the amount of center overlap desired for final installation. If splicing is required, it should be done at this time. Splicing instructions can be found below. Attach the two lap clamps to the tracks at the overlap with the hardware provided.
2. Install the live-end and dead-end pulleys to the end of the tracks and secure with the hardware provided.
3. Secure the hanging clamps along the track sections at maximum 7' intervals. Raise the track to its permanent position and secure in place. Mount the floor pulley to the floor directly under and aligned with the track live end pulley.
4. Insert an equal amount of single carriers into each section of track. The carriers can be inserted at the open track ends located at the center overlap. Insert the master carriers into the track sections. Install the eye-bolt end stops to the open track ends at the overlap and secure.
5. Thread the operating cord through one wheel of the live-end pulley, through the holes in the carriers, the cord connectors of the master carrier and the eyebolt of the end stop. Run the cord around the dead-end pulley and through the single carriers of the other half of track and through one (1) of the cord connectors of the second master carrier. Loosely secure this end of the cable to the master with the cord connector. Thread the remaining end of the operating cable through the floor pulley, up and through the remaining wheel of the live end pulley, through the eye-bolt of the second section of track and to the remaining cord connector of the second master carrier. Loosely secure this end of the cable to the master carrier.
6. Snap one rubber spacer on the inside edge (edge facing the master carrier) of each single carrier, just above the cord hole.
7. Move the master carriers an equal distance from the pulley ends of their track sections. Remove the slack from the cord at the master carrier with the free ends of cord and secure the cord at both masters with the cord connectors provided. Cut off the excess cord.

IMPORTANT NOTES

- ◆ Never use less than five suspension points. The track should be supported at its ends.
- ◆ Support the live end pulley to the overhead structure using the hole provided on the pulley.
- ◆ Support media should be chain, steel members, or wire cable. **Never use rope.**
- ◆ One-way operating curtains require only one master carrier and do not have an overlap. The rest of the rigging procedure and hardware is the same as with a center opening, bi-part curtain.

II. CEILING INSTALLATIONS

Because ceiling mounted tracks do not provide the opportunity for vertical adjustment, it is very important that the ceiling structure be level. Any deviation can cause the space between the bottom of the curtain and the floor surface to be uneven. Shims or blocking may be required for this purpose.

Hanging clamps and lap clamps are not needed or provided for ceiling mounted track systems. The top of the track channel should be drilled every 18" for direct attachment to the ceiling structure. The track channel should be properly secured before inserting any accessories.

1. Install the live-end and dead-end pulleys to the end of the tracks and secure with the hardware provided.
2. Raise the track to its permanent position and secure in place. Be sure to overlap the tracks at the center in order to provide the necessary center overlap for the curtain. If splice clamps are required install them to the track sections as per splicing instructions and notes below. Mount the floor pulley to the floor directly under and aligned with the track live end pulley.
3. Insert an equal amount of single carriers into each section of track. The carriers can be inserted at the open track ends located at the center overlap. Insert the master carriers into the track sections. Install the eyebolt end stops to the open track ends at the overlap.
4. Thread the operating cord through one wheel of the live-end pulley, through the holes in the carriers, the cord connectors of the master carrier and the eyebolt of the end stop. Run the cord around the dead-end pulley and through the single carriers of the other half of track and through one (1) of the cord connectors of the second master carrier. Loosely secure this end of the cable to the master with the cord connector. Thread the remaining end of the operating cable through the floor pulley, up and through the remaining wheel of the live end pulley, through the eye-bolt of the second section of track and to the remaining cord

connector of the second master carrier. Loosely secure this end of the cable to the master carrier.

5. Snap one rubber spacer on the inside edge (edge facing the master carrier) of each single carrier, just above the cord hole.
6. Move the master carriers an equal distance from the pulley ends of their track sections. Remove the slack from the cord at the master carrier with the free ends of cord and secure the cord at both masters with the cord connectors provided. Cut off the excess cord.

IMPORTANT SPLICING INFORMATION

CEILING MOUNTED TRACK: Place splicing clamps on track and align holes in splicing clamps with factory drilled and tapped holes of the track channel. Insert twelve 1/4-20 by 5/16" long stove bolts through holes in sides of splice clamps and tighten securely into tapped holes in track channels. Refer to ADC drawing number P-2824-A2 for additional information.

SUSPENDED TRACK: Follow the instructions as given on ADC drawing number A2824A. Adjust the setscrews so that the walls and center opening of track channels are in alignment for proper operation.

INSTALLATION INSTRUCTIONS FOR SILENT STEEL CURTAIN TRACKS

WALK-DRAW MODELS 284, 284-N & 284-R

CEILING MOUNTED TRACK

1. Place the 2800 track channels on the floor or stable support for assembly.
2. The top of the track must be drilled every 18" for direct attachment to the ceiling structure. Shims or blocking may be required if the ceiling surface is uneven.
3. Splice the track sections together. Make sure that the assembled sections are not too large to handle. Refer to **drawing number P-2824-A2** and the notes below for additional ceiling mount splice clamp installation instructions.
4. Insert the single and master carriers from the open ends of the track and install the end stops (2809) with the hardware provided. If final assembly of track sections is to be made with the track in the mounted position, wait until assembly is complete to add carriers and end stops. You may opt to install the rubber bumpers (2825) onto the carriers at this time.
5. With the carriers and end stops installed lift the track into position and secure to ceiling structure with appropriate hardware.
6. It may be desirable to attach chains between carriers, especially on long tracks, or on tracks with heavy curtains where curtains will be pulled from either end. Chains will relieve the strain on the top of the curtain. It is often easier to push the folded curtain than pull the curtain from one end.

Important splicing information

Place splicing clamps on track and align holes in splicing clamps with holes that have been drilled and tapped in the sides of the track channel.

Insert twelve 1/4-20 x 5/16" long stove bolts through the holes in the sides of the splice clamps. Tighten them securely into the tapped holes in the track channel.

INSTALLATION INSTRUCTIONS FOR SILENT STEEL WALK-DRAW MODELS 284, 284-N & 284-R SUSPENDED INSTALLATIONS

1. Place the track channels on the floor or a stable support for assembly.
2. If a center overlap is desired, overlap the tracks by the amount desired and attach the lap clamps (2807) to the track by inserting the bolt from below, through the hole in the top of each clamp. Install and tighten the nuts on top of the clamp to the bolt to lock the clamps in place.
3. If required, splice the track sections together. Make sure that the assembled sections are not too large to handle. Refer to **drawing number a-2824-1724** for additional splice clamp installation instructions. Be sure to adjust the set screws of the splice clamps such that the side, top and bottom surfaces of the two joined track channels are properly aligned.
4. Attach hanging clamps (2808) a maximum of every 7' along the track length and at each end of the track channels.
5. Insert the single and master carriers into the track sections and install the end stops at the open ends with the hardware provided. You may opt to install the rubber bumpers (2825) onto the carriers at this time.
6. With the carriers and end stops installed lift the track into position and secure it to the ceiling structure with appropriate hardware. One-way tracks will require 2 end-stops. Center overlapped track will require 4 end-stops.
7. It may be desirable to attach chains between carriers, especially on long tracks, or on tracks with heavy curtains where curtains will be pulled from either end. Chains will relieve the strain on the top of the curtain fabric. It is often easier to push the folded curtain around curves rather than pull the curtain around the curve from one end of the curtain.

Important suspended track information

Never use less than five (5) lines to suspend any track system.

Always attach hanging clamps and use support lines to the ends of the track sections.

Firmly anchor end stops at each end of the track channels.

Pipe battens can be used to provide additional support to suspended track systems. Pipe clamps are available for attachment of hanging clamps to common size pipes.

If possible, add hanging clamps immediately alongside of splice clamps. These will aid in maintaining correct track alignment at the splice.

When properly supported, a suspended track system will not sway a great deal during curtain operation.

A chain, positioning pole, or other positioning device can be attached to the master carrier(s) to aid in curtain operation.

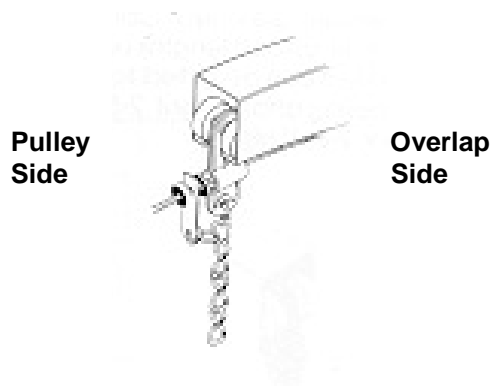
BACK-PACK GUIDE SCHEDULE

GUIDE	GUIDE I.D.	WASHER No 1.	O.D.	I.D.	THICKNESS	WASHER No 2.	O.D.	I.D.	THICKNESS	OPERATION
1733	5/16"	N/A	N/A	N/A	N/A	N/A	N/A	N/A	N/A	HAND
1734	1 / 4"	N/A	N/A	N/A	N/A	N/A	N/A	N/A	N/A	MACHINE
1735	3/8"	N/A	N/A	N/A	N/A	N/A	N/A	N/A	N/A	HAND (1730)
2833A	5/8"	2827A	1-1/16"	5/8"	7/16"	2827A	1-1/16"	5/8"	7/16"	HAND (2830)
2834	1 / 4"	2826	1"	9/16"	1/8"	2827	1"	9/16"	7/16"	MACHINE
2833	7/16"	2826	1"	9/16	1/8"	2827	1"	9/16"	7/16"	HAND

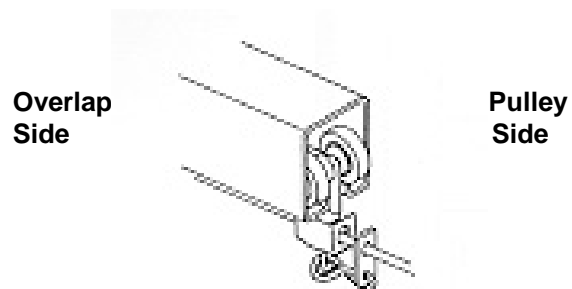
CAUTION TAG

ATTACHMENT OF BACK-PACK GUIDES

- Back-pack guides must be attached to the back (pulley side) of the track single carriers.
- Check the chain connecting the back-pack guide body to the carrier and make certain that it is not twisted, or in conflict with the curtain fabric.
- The half-link closest to the back-pack guide must be entirely vertical for the back-pack to operate correctly.
- The half-link closest to the carrier swivel must be entirely horizontal for the back-pack to operate correctly.
- Do not attach back-pack guides to the last (off stage) carriers. Installing back-packs to these carriers will interfere with the end pulleys of the track and damage the operating cord or cable.
- Failure to adhere to the above warnings will result in damage to the track system components and/or hinder operation of the track system.

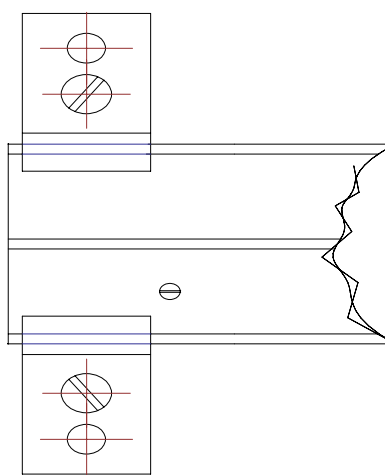
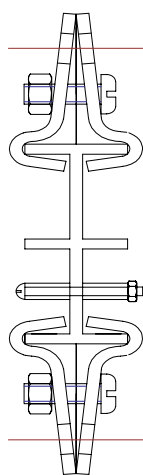
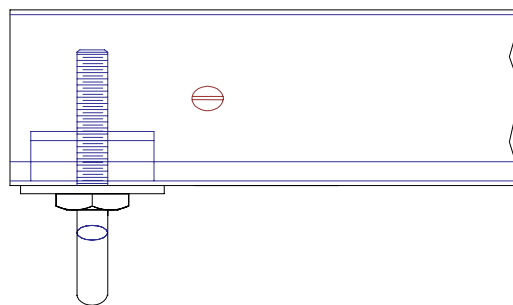
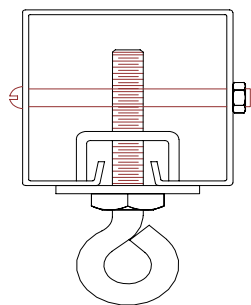


Model 280 Track Systems



Model 170 Track Systems

INSTALLATION INSTRUCTIONS FOR ALL ROTODRAPERS EXCEPT MODEL 06 AND 06A



Two 1/4" diameter bolts are supplied with all Rotodrapers (except Models 06 & 06A) and are to be installed 2" from the ends of the track as illustrated above. To install the bolts, drill a 1/4" clearance hole in front of each end stop. Insert the bolts with spacing tubes (if included) as shown above. These bolts are used to add additional protection against the possibility of the Rotodraper coming out of the track.

Install bolt after Rotodrapers are installed in tracks.

INSTALLATION INSTRUCTIONS
SILENT STEEL MODEL 280 AND BESTEEL MODEL 170
EQUIPPED WITH CENTER TAKE-OFF LIVE END PULLEY

1. Track systems that utilize center take-off pulleys (CTO) incorporate a dead end pulley in place of the live end pulley. Make the substitution of a dead end pulley in the instructions for the track system being used. Assemble the remainder of the track system according to its standard instructions to the point where it is ready for cable installation.
2. The CTO can be located along the track only in areas where the return cable is in an open area (not going through carriers). The CTO can be attached to the track anywhere between the center overlap and as close as 4 feet to the dead-end pulley. Do not locate the CTO any closer than 4 feet from the dead end pulley.
3. The operating cable can be installed either before the track is raised to its final position, or after the track is in place. Starting at the CTO, thread the cable around one of the CTO's sheaves, around one of the dead end pulleys, through the single carriers and then the master carrier to the other side of the track. Continue to and around the other dead end pulley, then back through the single carriers and master carrier on that side. Thread the cable past the center overlap and around the remaining CTO sheave.

Do not tighten the master carrier's cable clamps at this time.

4. An additional mule sheave is usually required to mule the cables down to a floor mounted curtain machine. The mule block can be ceiling, or wall mounted but must be able to support the operating load of the system. Run the cables from the CTO to the mule block, and then down to the curtain machine making sure that the lines remain in alignment. Connect the cables to the curtain machine's grooved cable drum, referring to form 745-A for instructions.
5. It is very important that the track be securely braced in every direction so that it does not sway during operation. The use of a CTO will create a load perpendicular to the track as the system operates. Make sure to add supports to the system that will allow for this additional force. Any movement of the track will affect cable tension.
6. Locate the master carriers an equal distance from the ends of their tracks, and secure the operating cable to the master carriers with the cable clamps provided.
7. Test the track and machine operation several times prior to attaching the curtain to the track system.

NOTE: FOR MANUALLY OPERATED 170 TRACK, REFER TO FORM 710.
FOR MANUALLY OPERATED 280 TRACK, REFER TO FORM 718.

INSTALLATION INSTRUCTIONS FOR RUBBER SPACERS AND BUMPERS

<u>RUBBER SPACER</u>	<u>DESCRIPTION</u>
1726	5/8" O.D. X 5/16" I.D. X 1/8" THICK
2825	1/2" O.D. X 1/2" DEEP, TAPERED WITH SLOT
2826	1" O.D. X 1/2" I.D. X 1/8" THICK
2827	1" O.D. X 1/2" I.D. X 7/16" THICK
2827A	1-1/4" O.D. X 5/8" I.D. X 5/16" THICK

BESTEEL MODEL 171-R TRACK (HAND OR MACHINE OPERATED)

- One 1726 Rubber Spacer is inserted between each carrier.
- If Backpack Guides are used, the 1726 is inserted between each Backpack Guide and the carrier to which it is attached.

BESTEEL MODEL 172-R TRACK (HAND OPERATED)

- One 2826 Rubber Spacer is inserted between each carrier.
- If Backpack Guides are used, the 2826 is inserted between each Backpack Guide and the carrier to which it is attached.

SILENT STEEL MODEL 280 TRACK (HAND OR MACHINE OPERATED)

- One 2825 Rubber Bumper is attached to each carrier, directly above the opening for the cord, on the side facing the master carrier.
- If Backpack Guides are used, the 2826 is inserted between each Backpack Guide and the carrier to which it is attached. One 2827 Rubber Spacer is inserted between each Backpack Guide and the following carrier. One 2827 Rubber Spacer is inserted between the master carrier and the adjoining single carrier.

SILENT STEEL MODEL 280-A TRACK (HAND OR MACHINE OPERATED)

- One 2826 Rubber Spacer is inserted between each carrier.
- If Backpack Guides are used, follow the same procedure as described above for the Model 280 track equipped with Back-Pack Guides.

SILENT STEEL MODELS 281 AND 282 TRACKS (HAND OR MACHINE OPERATED)

- One 2827 Rubber Bumper is inserted between each carrier.
- If Back-Pack Guides are used, follow the same procedure as described above for the Model 280 track equipped with Backpack Guides.

SILENT STEEL MODELS 283-N AND 283-R (HAND OPERATED)

- Two 2827-A Rubber Spacers are inserted between each carrier.
- If Backpack Guides are used, one 2827-A Rubber Spacer is inserted between each Backpack Guide and the carrier to which it is attached. One 2827-A Rubber Spacer is inserted between each Backpack Guide and the carrier that follows it.

SILENT STEEL MODELS 283-N AND 283-R (MACHINE OPERATED)

- One 2827 Rubber Spacer is inserted between each carrier.
- If Backpack Guides are used, follow the same procedures as are used for Model 280 track equipped with Backpack Guides.

GENERAL COMMENTS

Rubber spacers are never inserted between single carriers and end pulleys. This also applies to backpack guides. Never attach a backpack guide to the outer-most single carriers next to the live and dead-end pulleys. Also never attach backpack guides to master carriers.



CORD ATTACHMENT TO GROOVED CABLE DRUM ADC SILENT STEEL AND BESTEEL MODEL TRACKS

1. After the cable has been threaded through the pulleys, carriers and track, place the excess cable on the floor beneath the live-end pulley. Make sure to pull at least an extra 5 feet of cord all the way through. At this time the machine should be mounted beneath the live-end pulley. A plumb line may be used to ensure proper alignment between the machine and the live-end pulley.

Thumb Screw

Driving Dog

2. Disengage the drum from the drive shaft by loosening the thumb screw on the driving dog (see [Photo 1](#)). Thread the end of the cable through the hole in one end of the drum.

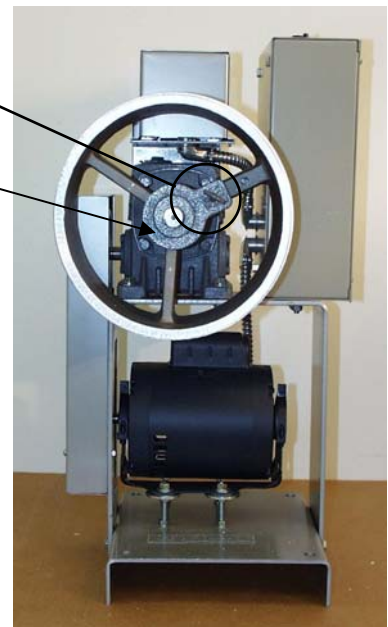


Photo 1

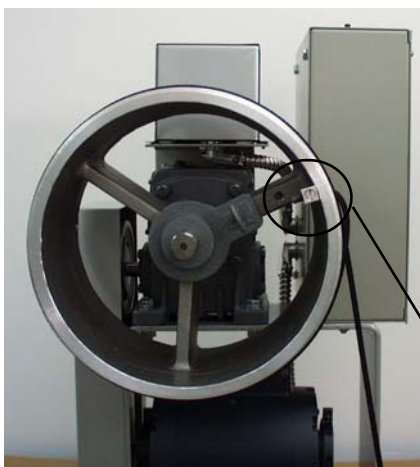


Photo 2

3. Fasten the end of cable to the inside of the drum with cord the cable connector provided. The cord clamps will be in a cloth bag, tied to the machine (see [Photo 2](#)).

Cable Clamp (CF-1)



4. Following the grooves carefully, wrap the cable the drum to within 4 grooves of the far end of the drum, or with an amount of cable equal to the amount of cable travel required **plus 5 feet**. Remove all slack in the system by pulling the other end of the cable. **Be careful not to make the cord too taut!** Damage to track components and curtain machine may occur **if cable is too taut**.

Note at least 4 empty grooves

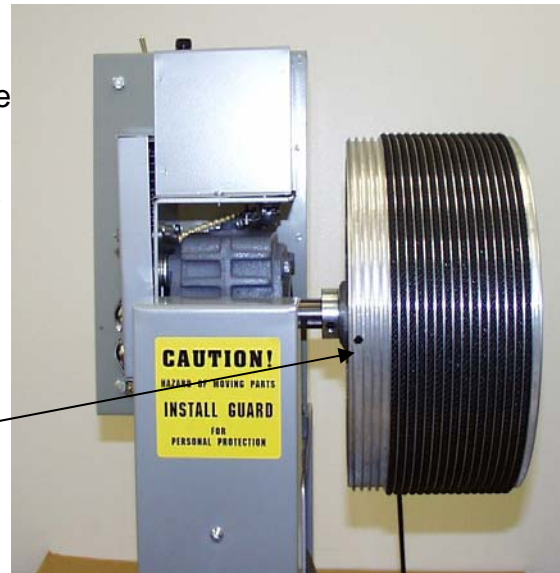


Photo 3

5. Leaving at least 1 empty groove, wind 3 wraps of the cord around the drum in the opposite direction of the first cable. Feed the end of the cable through the hole in the drum and secure it with a cord connector (see Photo 1). Cut off any excess cable. Your drum should now look the drum in Photo 4 below.
6. Turn the drum until the hole of the driving dog lines up with the hole in the drum spoke. Engage the drum by tightening the thumb screw. (See photo 1)
7. The machine is now ready for limit switch adjustment. **DO NOT OPERATE THE MACHINE UNTIL THE LIMIT SWITCHES HAVE BEEN SET.** Directions for limit switch adjustment are located in the machine manual that accompanied the machine.



Photo 4

Limit switch cover. Limit switches located under cover. DO NOT REMOVE COVER BEFORE READING MACHINE INSTALLATION MANUAL.

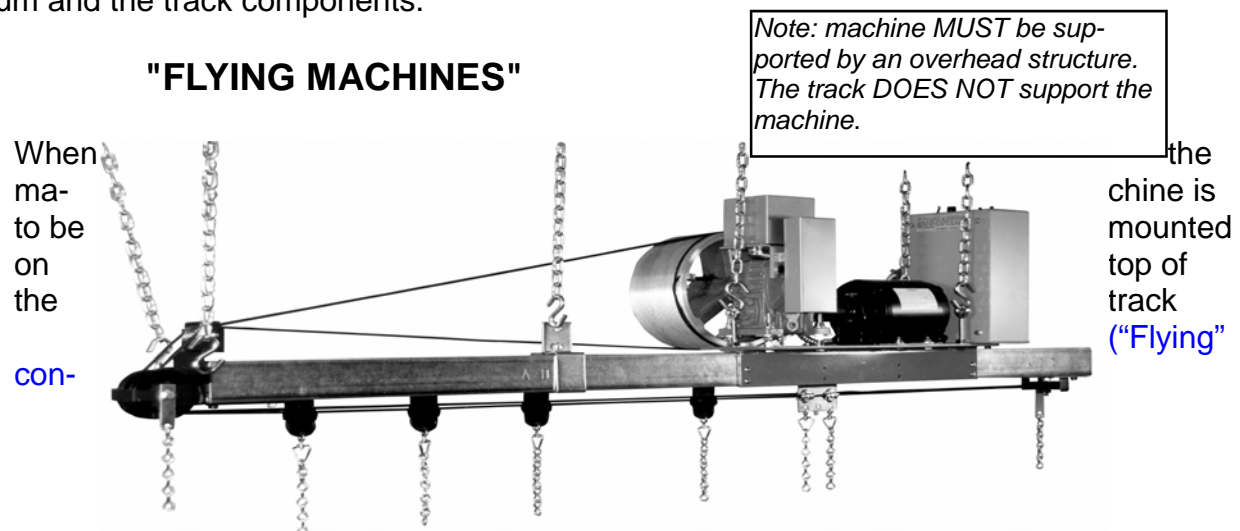
Cable properly loaded on drum.

At least 1 empty groove between cables.



IMPORTANT NOTES

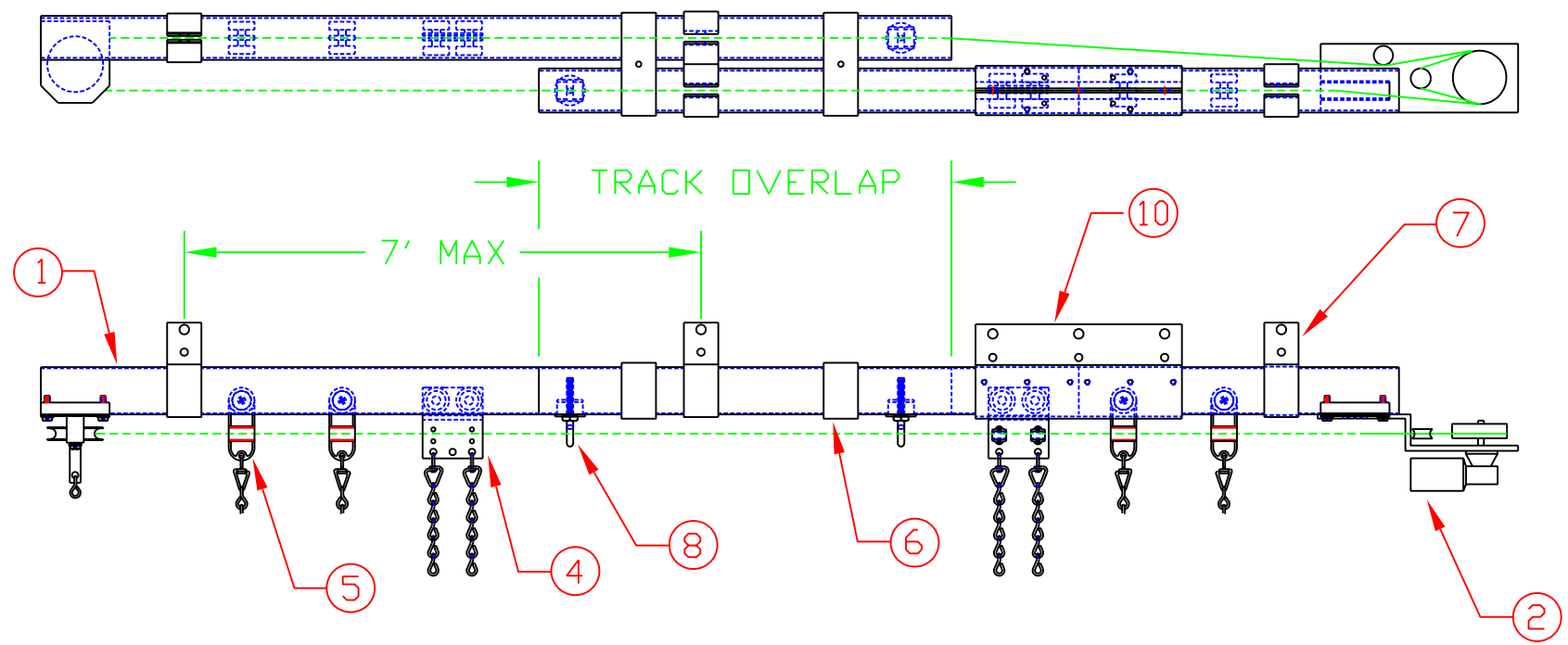
- All wire-centered cable stretches during its first few weeks of use. It is strongly recommended that periodic checks be made, and excess slack be taken **out**, especially during the first few weeks of operation.
- Do not use cable that is larger than what will nest properly in the grooves of the cable drum (**3/16" in most cases**).
- In order to maintain a proper fleet angle, the machine's drum should never be less than 10 feet from the live-end pulley. A plumb line should be run from the center of the live-end pulley to the floor to ensure that the drum is vertically in line with the live-end pulley.
- Always use a covered wire center cable. Uncoated steel cable **will** damage the aluminum drum and the track components.



(**figuration**), follow the previous instructions for threading the cable. Mount the machine to the top of the track with the angle bracket supplied with the machine. Steel track must be drilled and tapped to fasten the angle bracket. Eye bolts for securing the machine to the overhead structure are also furnished on the base. A special live-end pulley must be used to guide the cable up and over the top of the track to the machine. The machine must be mounted to the track at least 10 feet from the flying live-end pulley.

NOTE: THE MACHINE MUST BE SECURED TO AN OVERHEAD STRUCTURE FROM THE EYEBOLTS OF THE MACHINE BASE. THE TRACK ALONE CANNOT SUPPORT THE WEIGHT AND TORQUE OF THE MACHINE.

End of Instructions



- ① - 2800 TRACK

② - 2928 MACHINE

③ - 2804 DEAD END (2864,2864-A)

④ - 2802 MASTER CARRIER (2850,2852)

⑤ - 2801 SINGLE CARRIER (2849,2851)

⑥ - 2807 LAP CLAMP

⑦ - 2808 HANGING CLAMP

⑧ - 2809 END STOP
- ⑨ - OPERATING CABLE

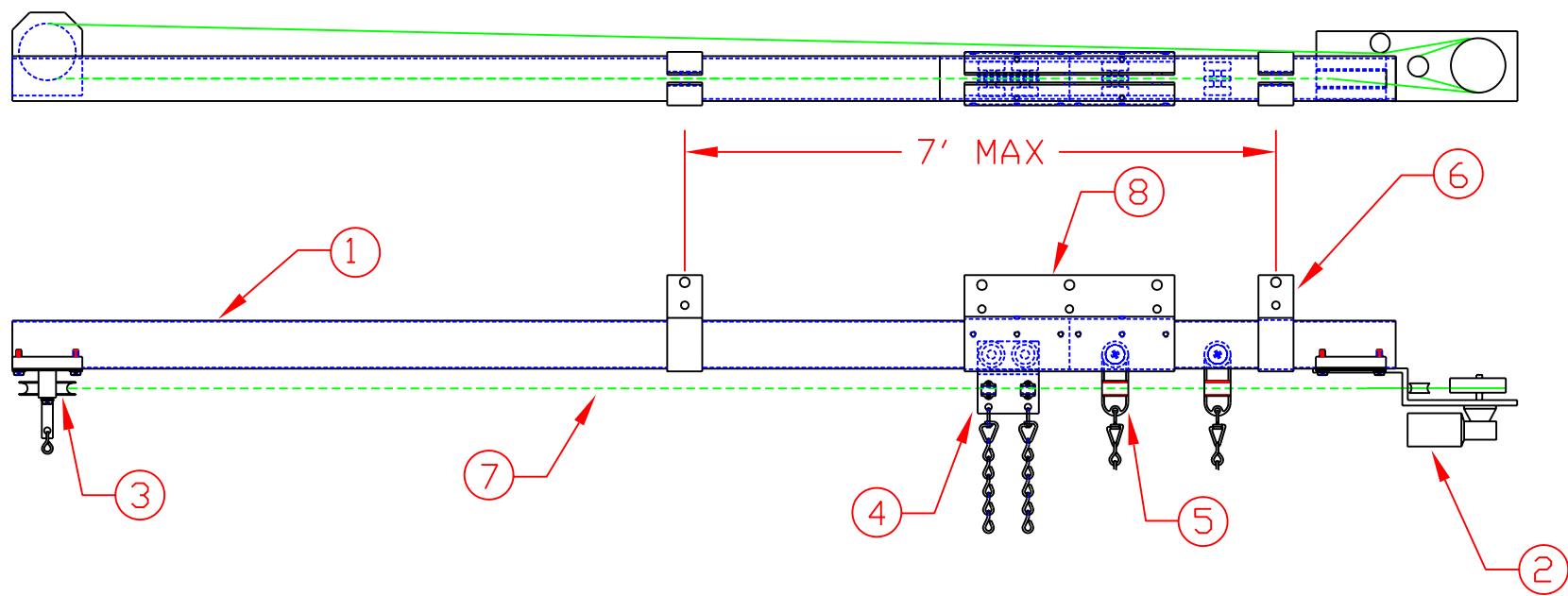
⑩ - 2824 SPLICE CLAMP (IF NEEDED)

(* ,*) DENOTES ALTERNATIVE COMPONENTS

AUTOMATIC DEVICES COMPANY
2121 S. 12TH ST. ALLENTOWN, PA 18103

THIS DRAWING HAS BEEN PREPARED AS A SERVICE TO OUR CUSTOMER AND IS INTENDED ONLY TO BE SUGGESTIVE IN NATURE AND IS NOT TO BE USED AS AN ACTUAL INSTALLATION DRAWING. PREVAILING JOB CONDITIONS AND ACCEPTED PRACTICES MUST BE TAKEN INTO ACCOUNT WHEN THE EQUIPMENT IS INSTALLED.

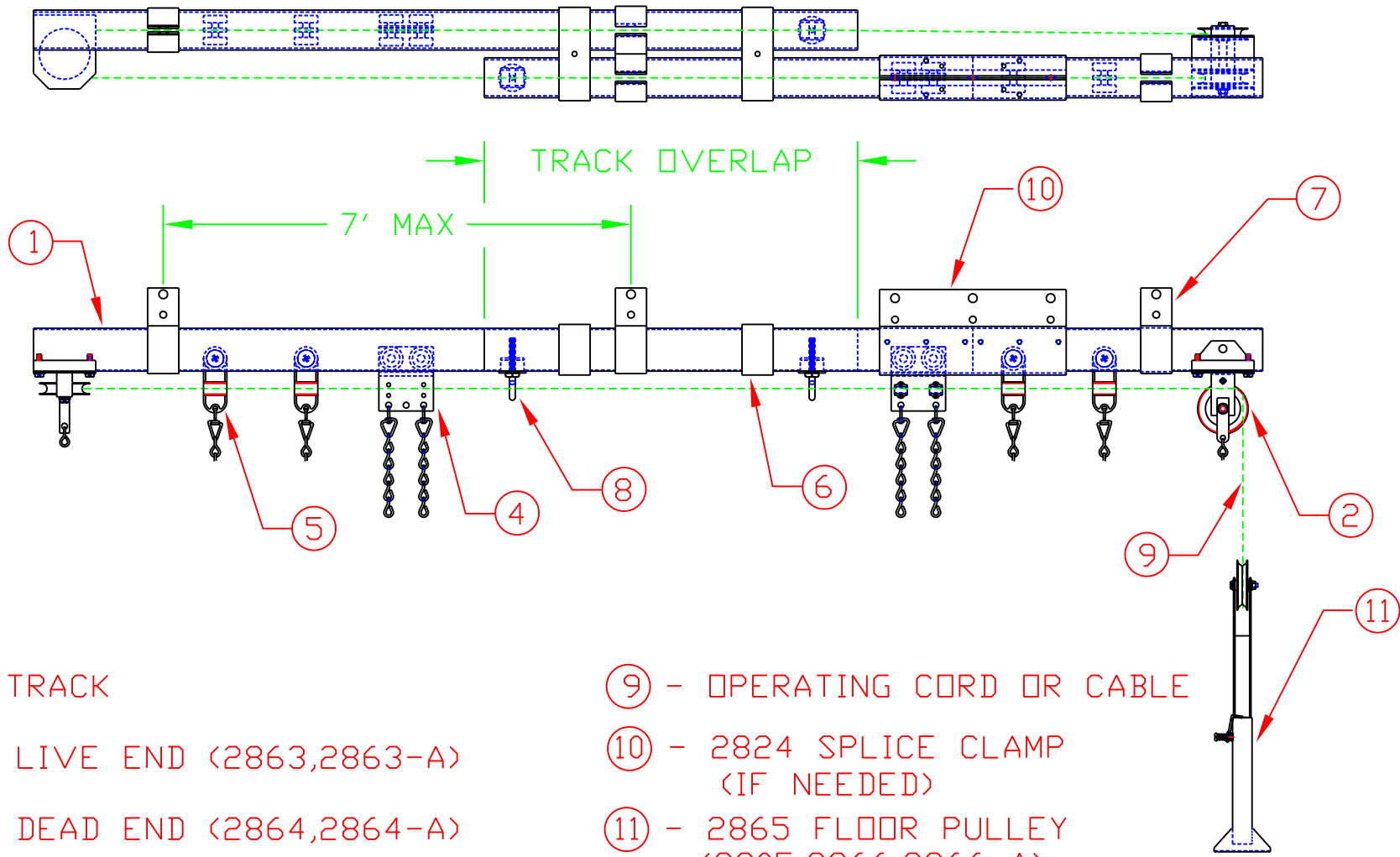
SIZE A	DATE 12/19/01	INSTALLATION INSTRUCTIONS	REV
DRAWN BY GAR		APPROVED BY	
SCALE NTS		SHEET 1 OF 1	
DESCRIPTION 280 BI-PARTING WITH 2928 MACHINE		DWG NO. II-280BP2928-01	



- ① - 2800 CHANNEL
- ② - 2928 INLINE MACHINE
- ③ - 2804 DEAD END (2864,2864-A)
- ④ - 2802 MASTER CARRIER (2850,2852)
- ⑤ - 2801 SINGLE CARRIER (2849,2851)
- ⑥ - 2808 HANGING CLAMP
- ⑦ - OPERATING CABLE
- ⑧ - 2824 SPLICE CLAMP (IF NEEDED)

(* ,*) DENOTES ALTER-NATIVE COMPONENTS

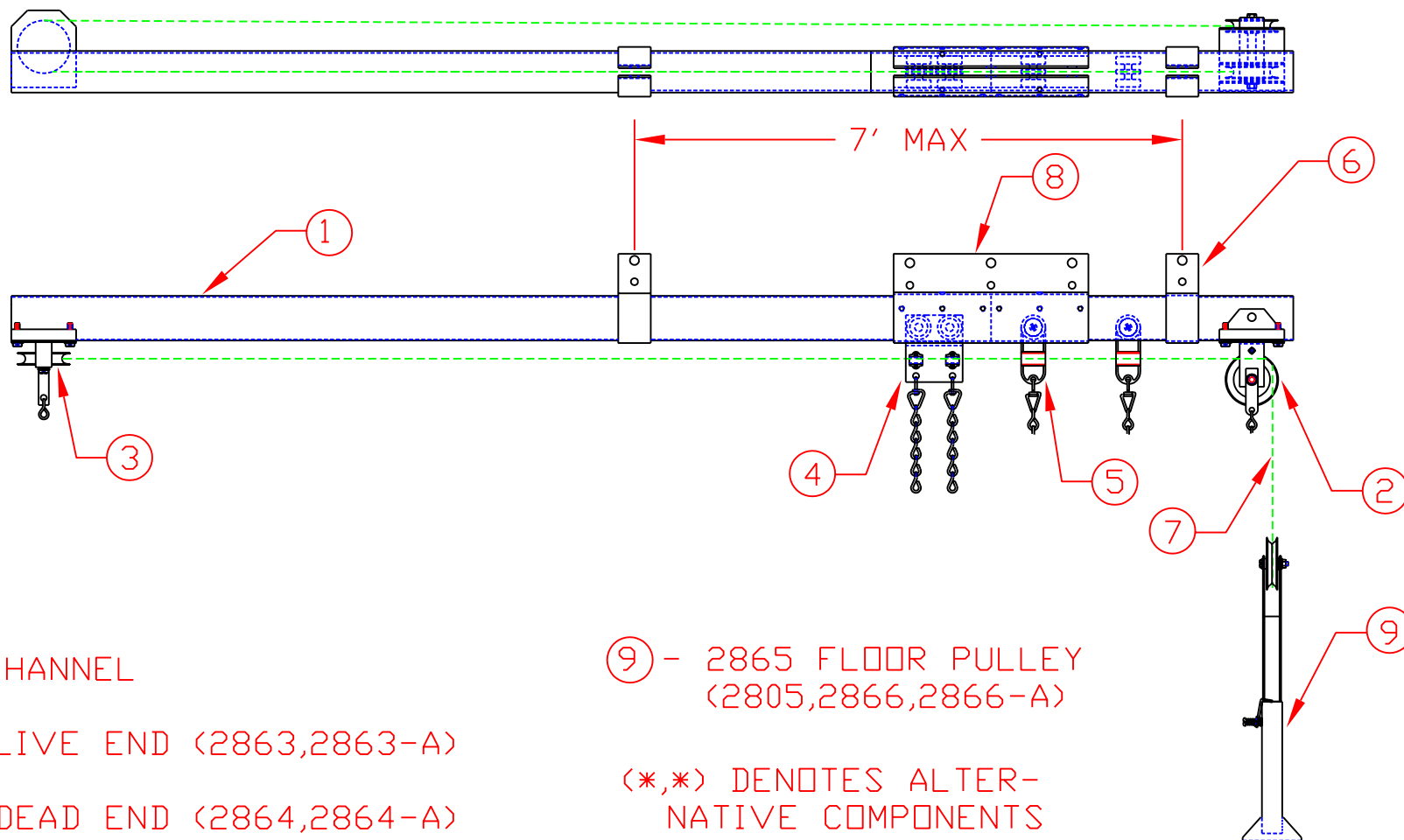
AUTOMATIC DEVICES COMPANY 2121 S. 12TH ST. ALLENTOWN, PA 18103				
THIS DRAWING HAS BEEN PREPARED AS A SERVICE TO OUR CUSTOMER AND IS INTENDED ONLY TO BE SUGGESTIVE IN NATURE AND IS NOT TO BE USED AS AN ACTUAL INSTALLATION DRAWING. PREVAILING JOB CONDITIONS AND ACCEPTED PRACTICES MUST BE TAKEN INTO ACCOUNT WHEN THE EQUIPMENT IS INSTALLED.				
SIZE A	DATE 12/19/01	INSTALLATION INSTRUCTIONS		REV
DRAWN BY GAR	APPROVED BY	DESCRIPTION 280 ONE-WAY WITH 2928 MACHINE		
SCALE NTS	SHEET 1 OF 1	DWG NO. II-280W2928-01		



- ① - 2800 TRACK
 - ② - 2803 LIVE END (2863,2863-A)
 - ③ - 2804 DEAD END (2864,2864-A)
 - ④ - 2802 MASTER CARRIER (2850,2852)
 - ⑤ - 2801 SINGLE CARRIER (2849,2851)
 - ⑥ - 2807 LAP CLAMP
 - ⑦ - 2808 HANGING CLAMP
 - ⑧ - 2809 END STOP
- (*,*) DENOTES ALTERNATIVE COMPONENTS

- ⑨ - OPERATING CORD OR CABLE
- ⑩ - 2824 SPLICE CLAMP (IF NEEDED)
- ⑪ - 2865 FLOOR PULLEY (2805,2866,2866-A)

AUTOMATIC DEVICES COMPANY 2121 S. 12TH ST. ALLENTOWN, PA 18103			
THIS DRAWING HAS BEEN PREPARED AS A SERVICE TO OUR CUSTOMER AND IS INTENDED ONLY TO BE SUGGESTIVE IN NATURE AND IS NOT TO BE USED AS AN ACTUAL INSTALLATION DRAWING. PREVAILING JOB CONDITIONS AND ACCEPTED PRACTICES MUST BE TAKEN INTO ACCOUNT WHEN THE EQUIPMENT IS INSTALLED.			
SIZE A	DATE 01/19/98	INSTALLATION INSTRUCTIONS	REV
DRAWN BY GAR	APPROVED BY	DESCRIPTION 280 BI-PARTING SUSPENDED SYSTEM	
SCALE NTS	SHEET 1 OF 1	DWG NO. II-280BPS-98	



① - 2800 CHANNEL

② - 2803 LIVE END (2863,2863-A)

③ - 2804 DEAD END (2864,2864-A)

④ - 2802 MASTER CARRIER (2850,2852)

⑤ - 2801 SINGLE CARRIER (2849,2851)

⑥ - 2808 HANGING CLAMP

⑦ - OPERATING CORD OR CABLE

⑧ - 2824 SPLICE CLAMP (IF NEEDED)

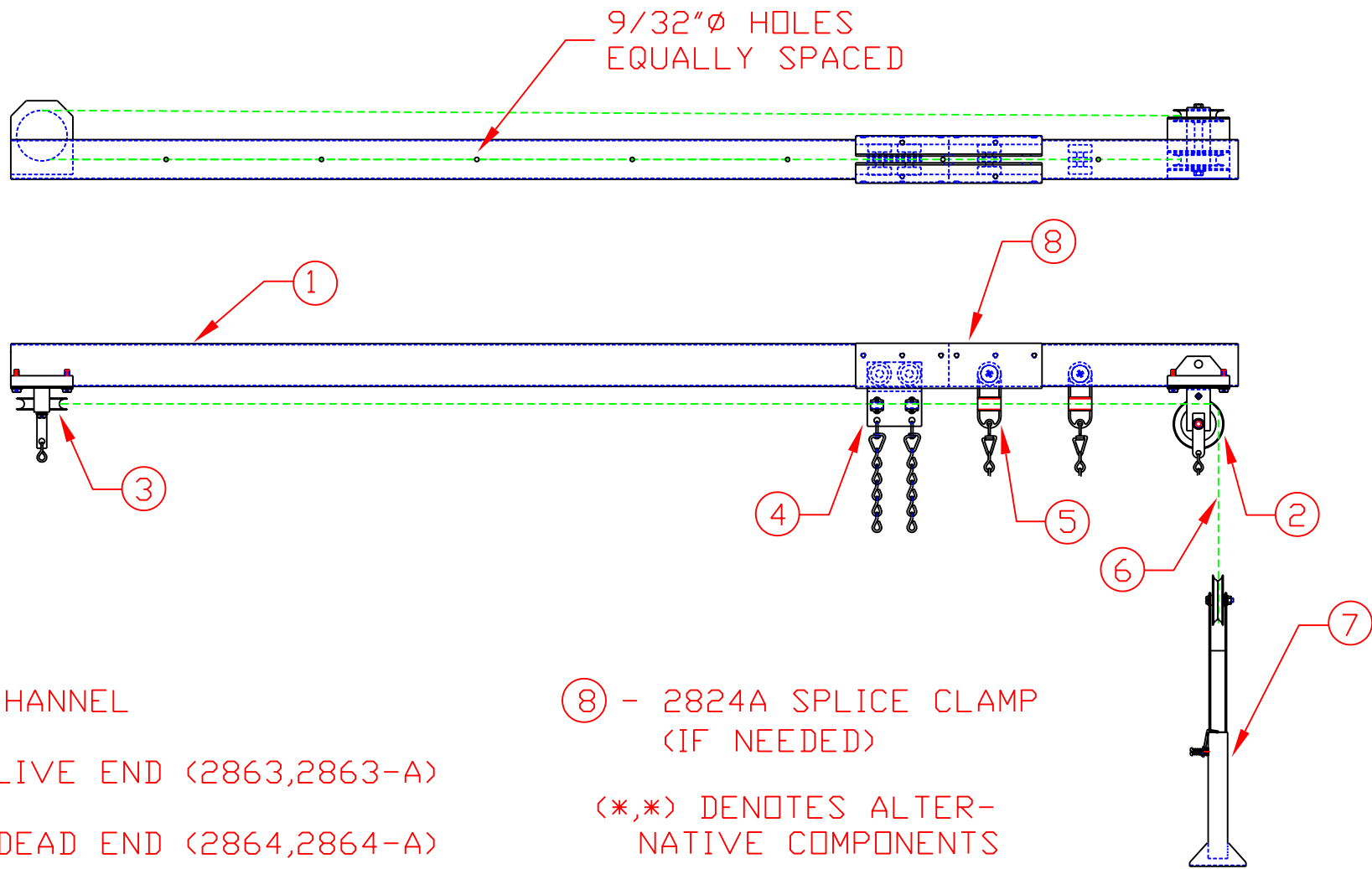
⑨ - 2865 FLOOR PULLEY
(2805,2866,2866-A)

(*,*) DENOTES ALTER-
NATIVE COMPONENTS

AUTOMATIC DEVICES COMPANY
2121 S. 12TH ST. ALLENTOWN, PA 18103

THIS DRAWING HAS BEEN PREPARED AS A SERVICE TO OUR CUSTOMER AND IS INTENDED ONLY TO BE SUGGESTIVE IN NATURE AND IS NOT TO BE USED AS AN ACTUAL INSTALLATION DRAWING. PREVAILING JOB CONDITIONS AND ACCEPTED PRACTICES MUST BE TAKEN INTO ACCOUNT WHEN THE EQUIPMENT IS INSTALLED.

SIZE A	DATE 05/19/98	INSTALLATION INSTRUCTIONS	REV
DRAWN BY GAR	APPROVED BY	DESCRIPTION 2800 TRACK ASSEMBLY	
SCALE NTS	SHEET 1 OF 1	DWG NO. II-280-98	



- ① - 2800 CHANNEL
- ② - 2803 LIVE END (2863,2863-A)
- ③ - 2804 DEAD END (2864,2864-A)
- ④ - 2802 MASTER CARRIER (2850,2852)
- ⑤ - 2801 SINGLE CARRIER (2849,2851)
- ⑥ - OPERATING CORD OR CABLE
- ⑦ - 2865 FLOOR PULLEY (2805,2866,2866-A)

⑧ - 2824A SPLICE CLAMP (IF NEEDED)

(*,*) DENOTES ALTERNATIVE COMPONENTS

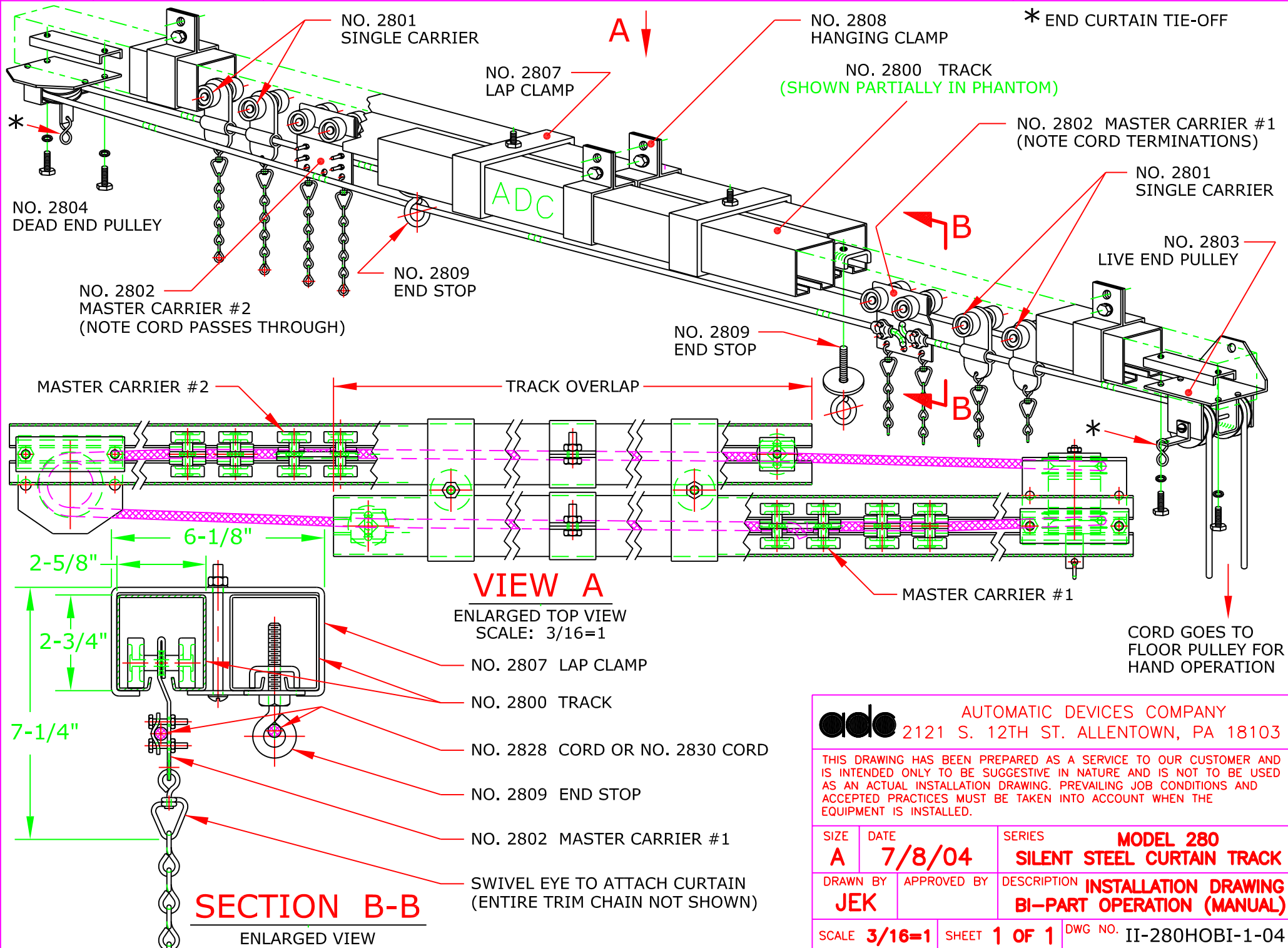
AUTOMATIC DEVICES COMPANY 2121 S. 12TH ST. ALLENTOWN, PA 18103			
THIS DRAWING HAS BEEN PREPARED AS A SERVICE TO OUR CUSTOMER AND IS INTENDED ONLY TO BE SUGGESTIVE IN NATURE AND IS NOT TO BE USED AS AN ACTUAL INSTALLATION DRAWING. PREVAILING JOB CONDITIONS AND ACCEPTED PRACTICES MUST BE TAKEN INTO ACCOUNT WHEN THE EQUIPMENT IS INSTALLED.			
SIZE A	DATE 05/19/98	INSTALLATION INSTRUCTIONS	REV
DRAWN BY GAR	APPROVED BY	DESCRIPTION 2800 TRACK LEG ASSEMBLY - CEILING MOUNTED	
SCALE NTS	SHEET 1 OF 1	DWG NO. II-280CL-98	

REV.

DATE:

DO NOT USE FOR MACHINE OPERATED TRACKS

FORM NO.: 280BPHOS



AUTOMATIC DEVICES COMPANY
2121 S. 12TH ST. ALLENTOWN, PA 18103

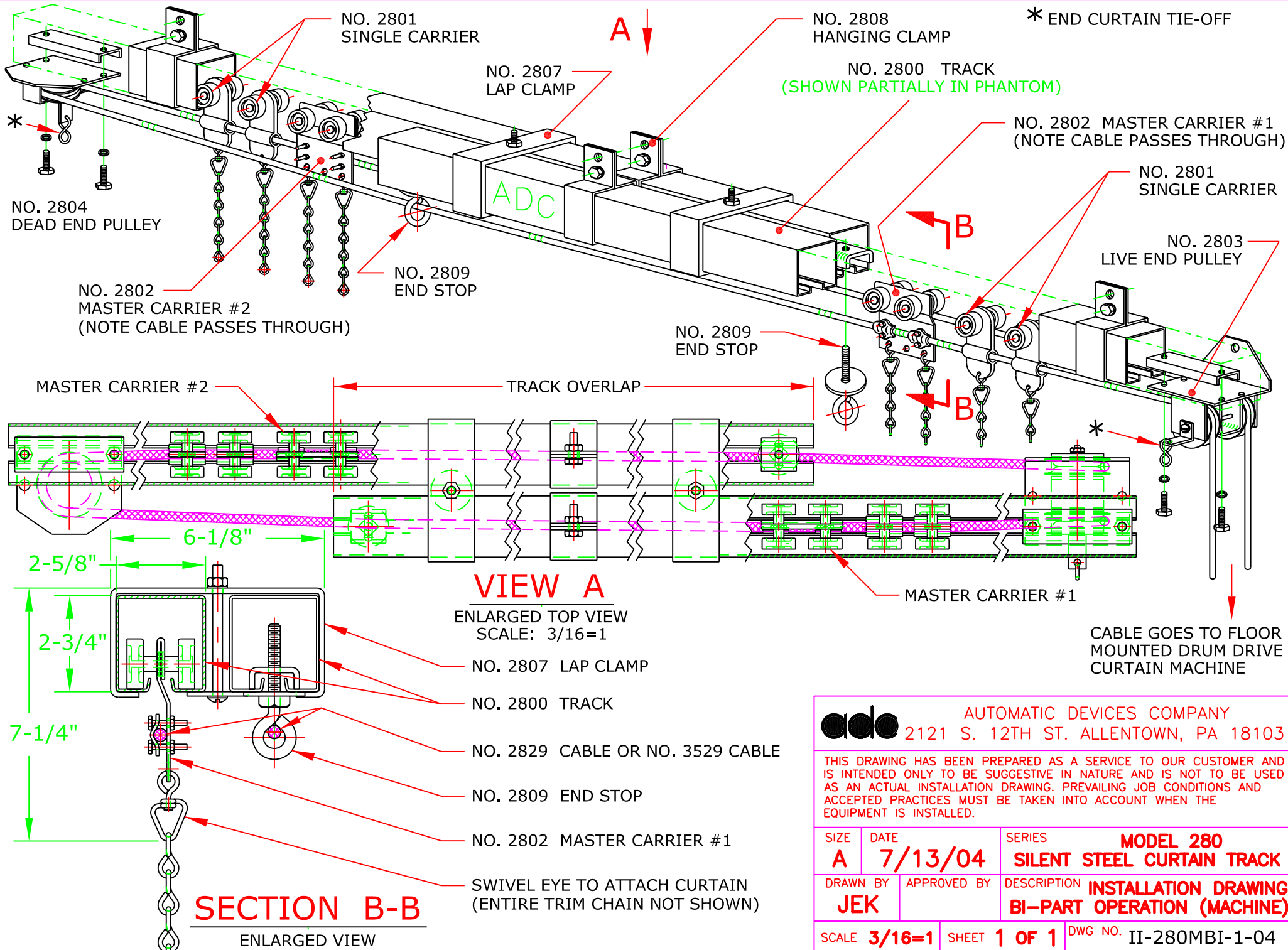
THIS DRAWING HAS BEEN PREPARED AS A SERVICE TO OUR CUSTOMER AND IS INTENDED ONLY TO BE SUGGESTIVE IN NATURE AND IS NOT TO BE USED AS AN ACTUAL INSTALLATION DRAWING. PREVAILING JOB CONDITIONS AND ACCEPTED PRACTICES MUST BE TAKEN INTO ACCOUNT WHEN THE EQUIPMENT IS INSTALLED.

SIZE A	DATE 7/8/04	SERIES MODEL 280
DRAWN BY JEK	APPROVED BY	DESCRIPTION SILENT STEEL CURTAIN TRACK
SCALE 3/16=1	SHEET 1 OF 1	DWG NO. II-280HOB1-1-04

REV.

DATE:

FORM NO.: 280BPMS



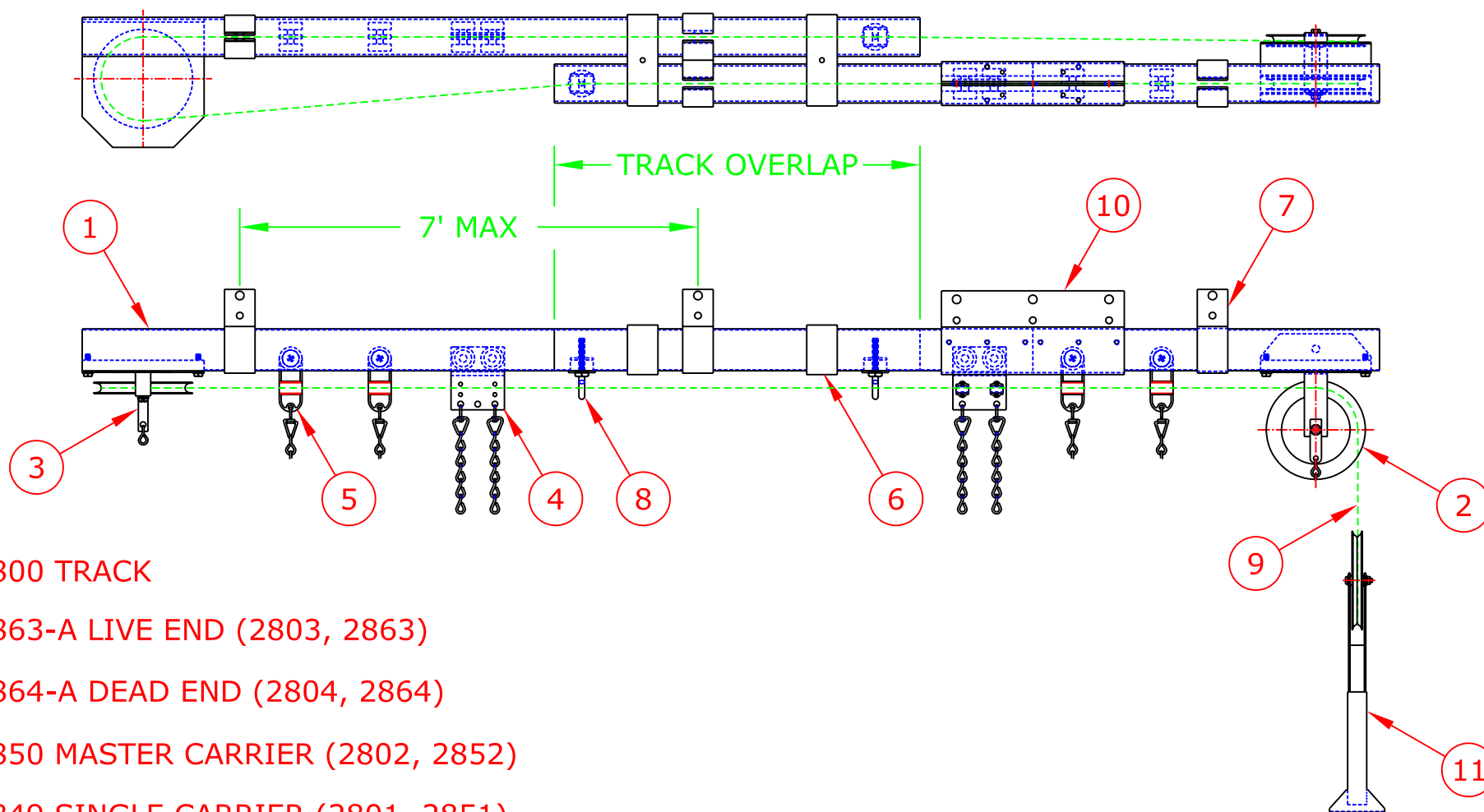
AUTOMATIC DEVICES COMPANY
2121 S. 12TH ST. ALLENTOWN, PA 18103

THIS DRAWING HAS BEEN PREPARED AS A SERVICE TO OUR CUSTOMER AND IS INTENDED ONLY TO BE SUGGESTIVE IN NATURE AND IS NOT TO BE USED AS AN ACTUAL INSTALLATION DRAWING. PREVAILING JOB CONDITIONS AND ACCEPTED PRACTICES MUST BE TAKEN INTO ACCOUNT WHEN THE EQUIPMENT IS INSTALLED.

SIZE A	DATE 7/13/04	SERIES MODEL 280
DRAWN BY JEK	APPROVED BY	DESCRIPTION SILENT STEEL CURTAIN TRACK
SCALE 3/16=1	SHEET 1 OF 1	DWG NO. II-280MBI-1-04

REV.

DATE:



- ① 2800 TRACK
- ② 2863-A LIVE END (2803, 2863)
- ③ 2864-A DEAD END (2804, 2864)
- ④ 2850 MASTER CARRIER (2802, 2852)
- ⑤ 2849 SINGLE CARRIER (2801, 2851)
- ⑥ 2807 LAP CLAMP
- ⑦ 2808 HANGING CLAMP
- ⑧ 2809 END STOP
- ⑨ OPERATING CORD OR CABLE
- ⑩ 2824 SPLICE CLAMP (IF NEEDED)
- ⑪ 2866-A FLOOR PULLEY (2805, 2865, 2866)

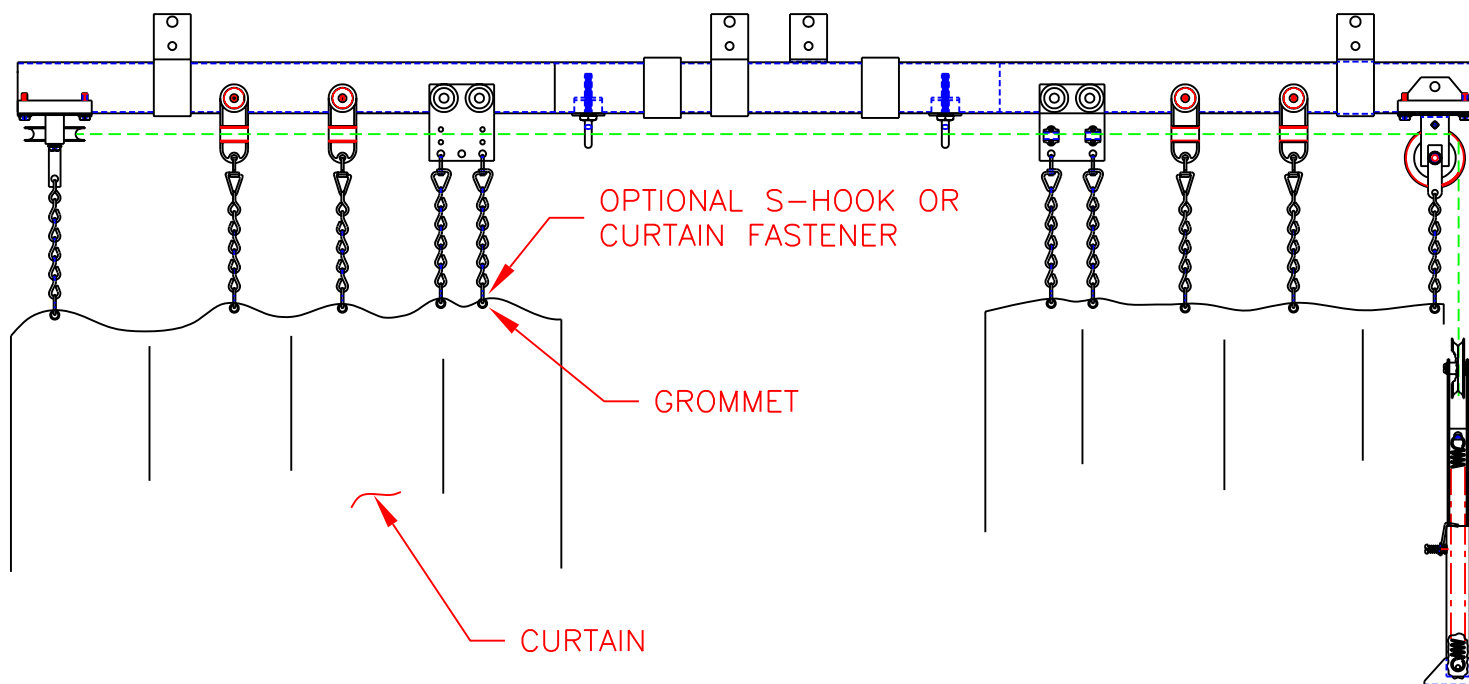
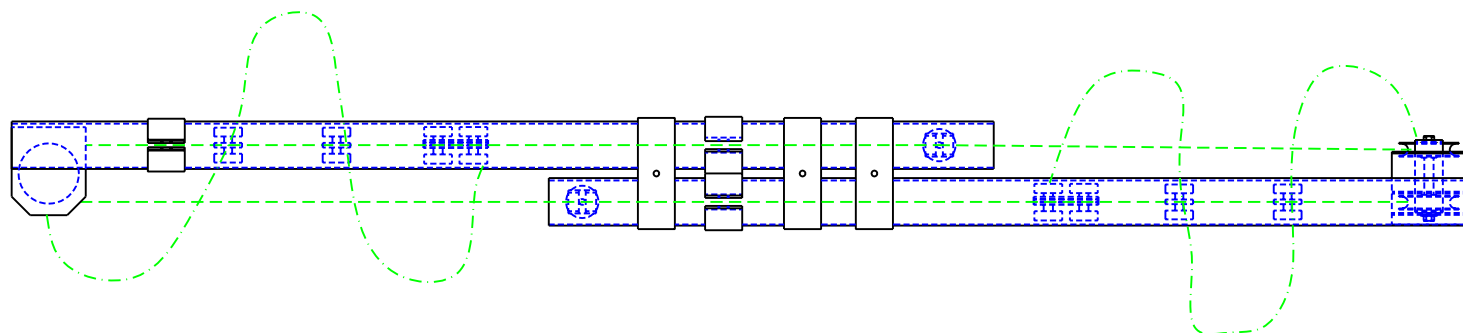
(* ,*) DENOTES ALTERNATIVE COMPONENTS



AUTOMATIC DEVICES COMPANY
2121 S. 12TH ST. ALLENTOWN, PA 18103

THIS DRAWING HAS BEEN PREPARED AS A SERVICE TO OUR CUSTOMER AND IS INTENDED ONLY TO BE SUGGESTIVE IN NATURE AND IS NOT TO BE USED AS AN ACTUAL INSTALLATION DRAWING. PREVAILING JOB CONDITIONS AND ACCEPTED PRACTICES MUST BE TAKEN INTO ACCOUNT WHEN THE EQUIPMENT IS INSTALLED.

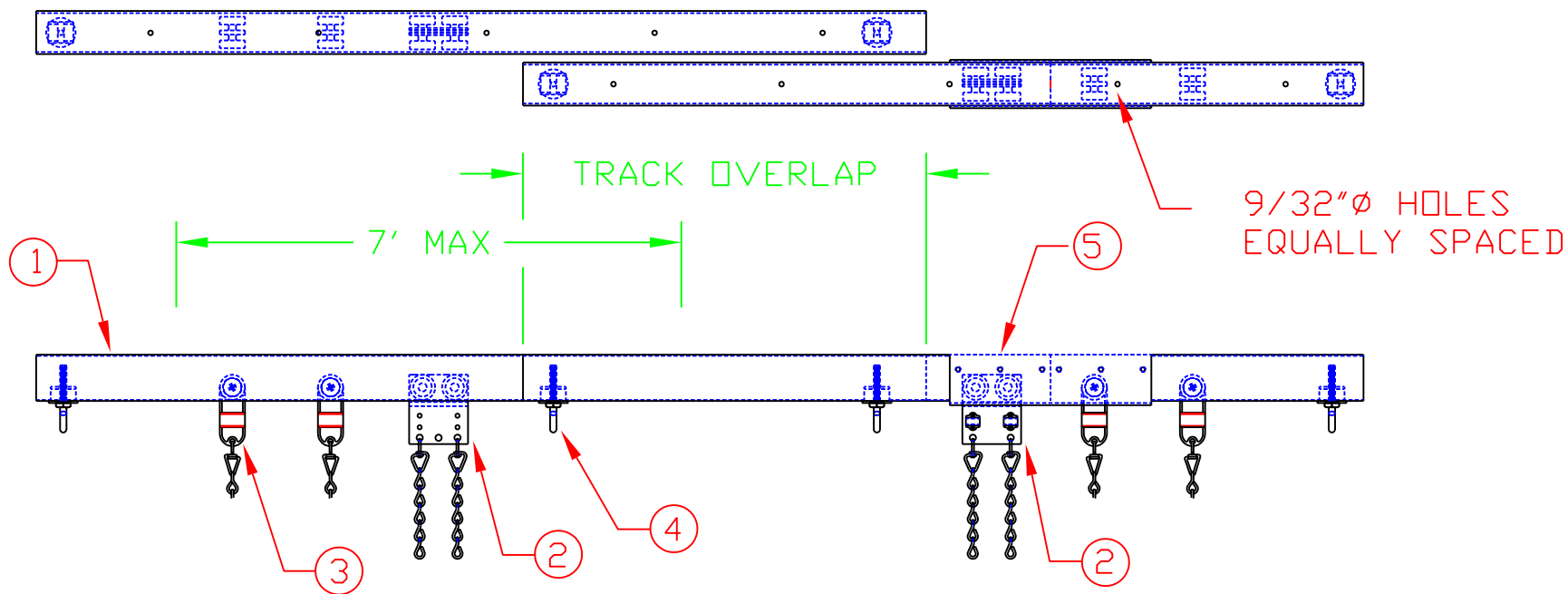
SIZE A	DATE 7/19/04	SERIES MODEL 283-R SILENT STEEL CURTAIN TRACK
DRAWN BY JEK	APPROVED BY	DESCRIPTION INSTALLATION DRAWING BI-PART OPERATION (MANUAL) SUSPENDED SYSTEM
SCALE NTS	SHEET 1 OF 1	DWG NO. II-283RBPS-1-04



AUTOMATIC DEVICES COMPANY
2121 S. 12TH ST. ALLENTOWN, PA 18103

THIS DRAWING HAS BEEN PREPARED AS A SERVICE TO OUR CUSTOMER AND IS INTENDED ONLY TO BE SUGGESTIVE IN NATURE AND IS NOT TO BE USED AS AN ACTUAL INSTALLATION DRAWING. PREVAILING JOB CONDITIONS AND ACCEPTED PRACTICES MUST BE TAKEN INTO ACCOUNT WHEN THE EQUIPMENT IS INSTALLED.

SIZE A	DATE 01/19/98	REV
DRAWN BY GAR	APPROVED BY	DESCRIPTION 2800 TRACK ASSEMBLY
SCALE NTS	SHEET 1 OF 1	DWG NO.



① - 2800 TRACK

② - 2802 MASTER CARRIER (2850,2852)

③ - 2801 SINGLE CARRIER (2849,2851)

④ - 2809 END STOP

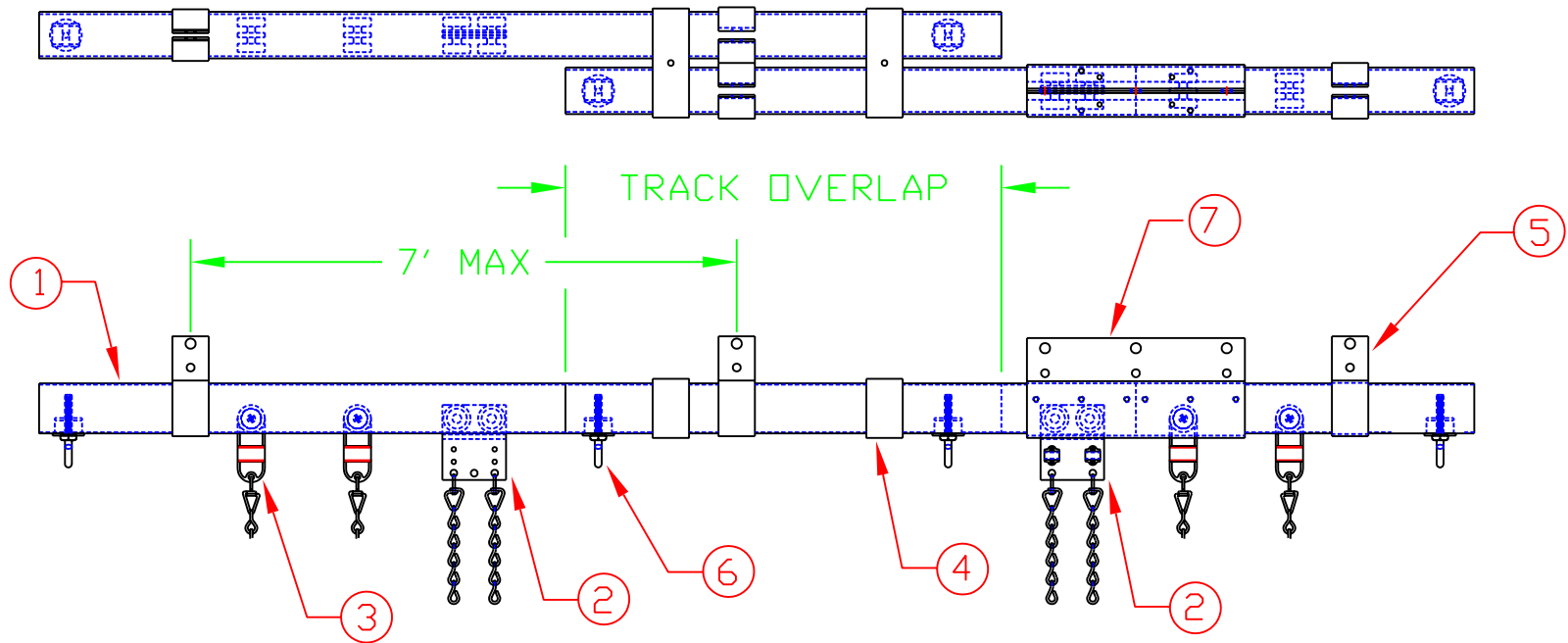
⑤ - 2824A SPLICE CLAMP
(IF NEEDED)

(* ,*) DENOTES ALTER-
NATIVE COMPONENTS

AUTOMATIC DEVICES COMPANY
2121 S. 12TH ST. ALLENTOWN, PA 18103

THIS DRAWING HAS BEEN PREPARED AS A SERVICE TO OUR CUSTOMER AND IS INTENDED ONLY TO BE SUGGESTIVE IN NATURE AND IS NOT TO BE USED AS AN ACTUAL INSTALLATION DRAWING. PREVAILING JOB CONDITIONS AND ACCEPTED PRACTICES MUST BE TAKEN INTO ACCOUNT WHEN THE EQUIPMENT IS INSTALLED.

SIZE A	DATE 01/05/02	INSTALLATION INSTRUCTIONS	REV
DRAWN BY GAR	APPROVED BY	DESCRIPTION 284 BI-PARTING CEILING MOUNTED	
SCALE NTS	SHEET 1 OF 1	DWG NO. II-284BPC-02	



① - 2800 TRACK

② - 2802 MASTER CARRIER (2850,2852)

③ - 2801 SINGLE CARRIER (2849,2851)

④ - 2807 LAP CLAMP

⑤ - 2808 HANGING CLAMP

⑥ - 2809 END STOP

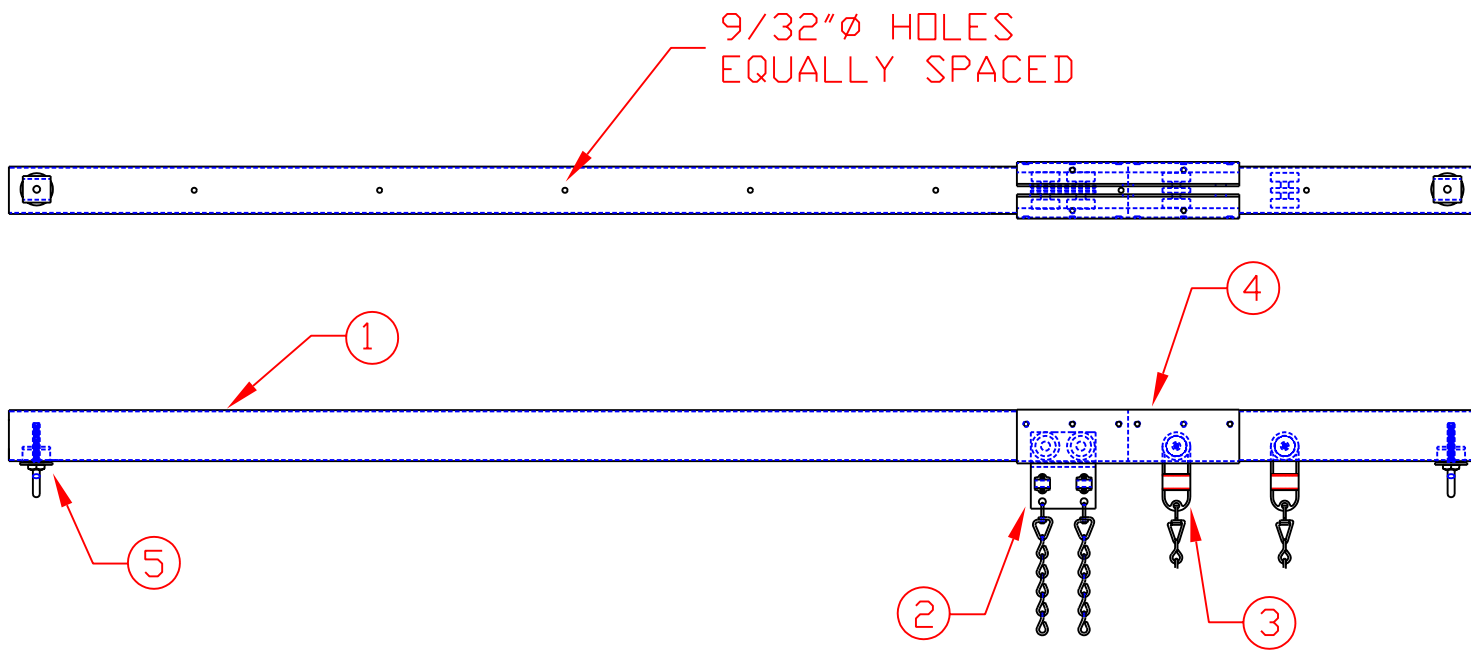
⑦ - 2824 SPLICE CLAMP
(IF NEEDED)

(* , *) DENOTES ALTERNATIVE COMPONENTS

AUTOMATIC DEVICES COMPANY
2121 S. 12TH ST. ALLENTOWN, PA 18103

THIS DRAWING HAS BEEN PREPARED AS A SERVICE TO OUR CUSTOMER AND IS INTENDED ONLY TO BE SUGGESTIVE IN NATURE AND IS NOT TO BE USED AS AN ACTUAL INSTALLATION DRAWING. PREVAILING JOB CONDITIONS AND ACCEPTED PRACTICES MUST BE TAKEN INTO ACCOUNT WHEN THE EQUIPMENT IS INSTALLED.

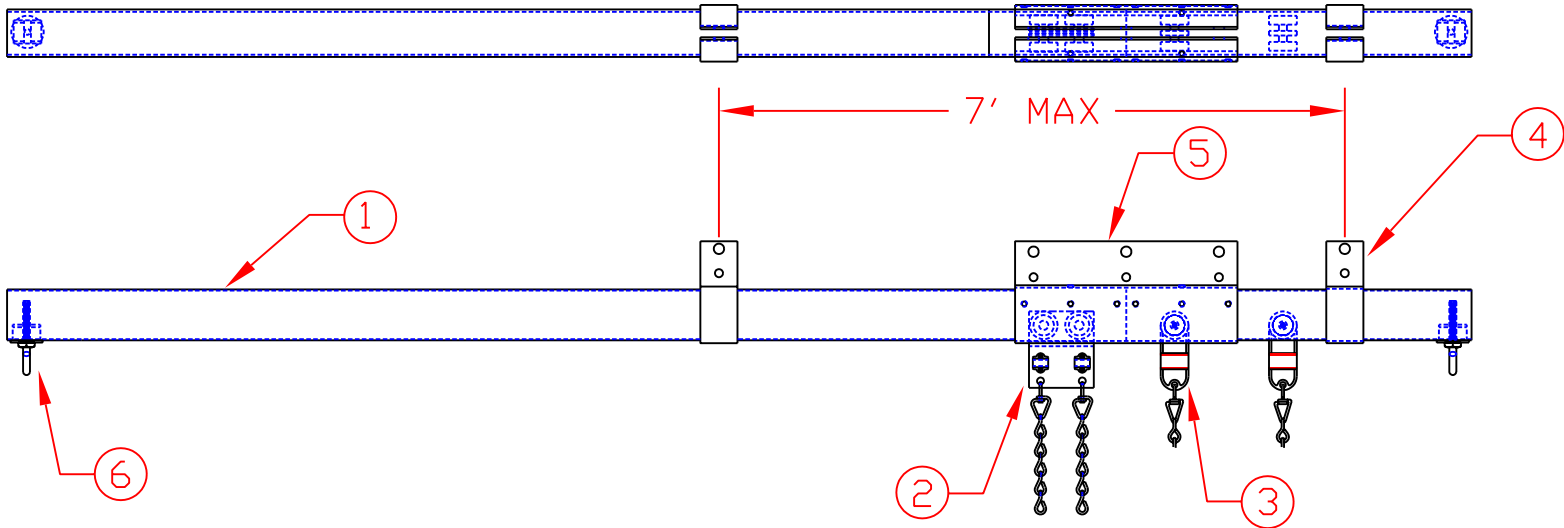
SIZE A	DATE 01/05/02	INSTALLATION INSTRUCTIONS	REV
DRAWN BY GAR	APPROVED BY	DESCRIPTION 284 BI-PARTING SUSPENDED SYSTEM	
SCALE NTS	SHEET 1 OF 1	DWG NO. II-284BPS-02	



- ① - 2800 CHANNEL
- ② - 2802 MASTER CARRIER (2850,2852)
- ③ - 2801 SINGLE CARRIER (2849,2851)
- ④ - 2824A SPLICE CLAMP (IF NEEDED)
- ⑤ - 2809 END STOP

(* ,*) DENOTES ALTERNATIVE COMPONENTS

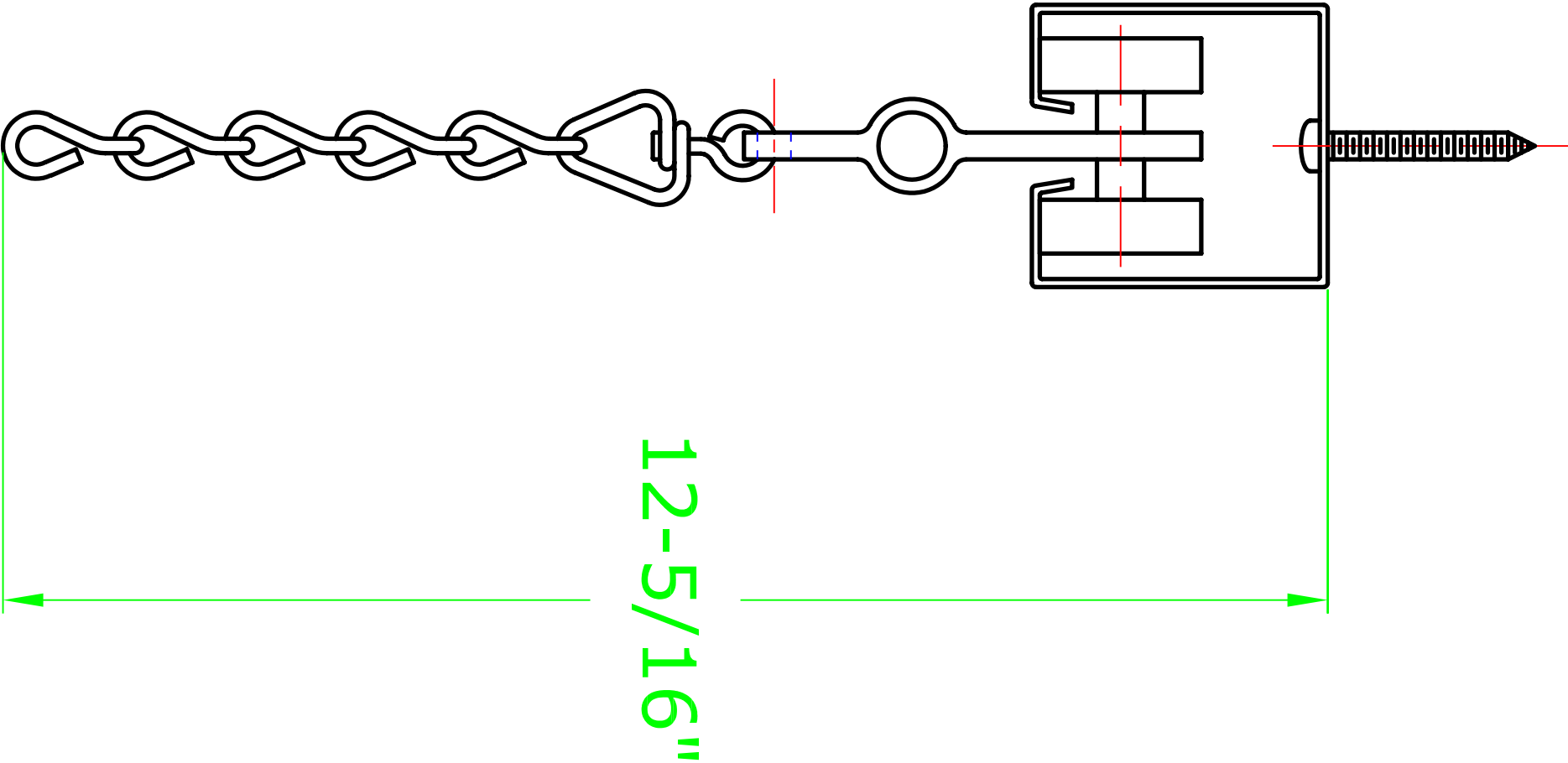
AUTOMATIC DEVICES COMPANY 2121 S. 12TH ST. ALLENTOWN, PA 18103			
THIS DRAWING HAS BEEN PREPARED AS A SERVICE TO OUR CUSTOMER AND IS INTENDED ONLY TO BE SUGGESTIVE IN NATURE AND IS NOT TO BE USED AS AN ACTUAL INSTALLATION DRAWING. PREVAILING JOB CONDITIONS AND ACCEPTED PRACTICES MUST BE TAKEN INTO ACCOUNT WHEN THE EQUIPMENT IS INSTALLED.			
SIZE	DATE	INSTALLATION	REV
A	01/05/02	INSTRUCTIONS	
DRAWN BY	APPROVED BY	DESCRIPTION	
GAR		284 TRACK LEG ASSEMBLY - CEILING MOUNTED	
SCALE	NTS	SHEET 1 OF 1	DWG NO. II-284CL-02



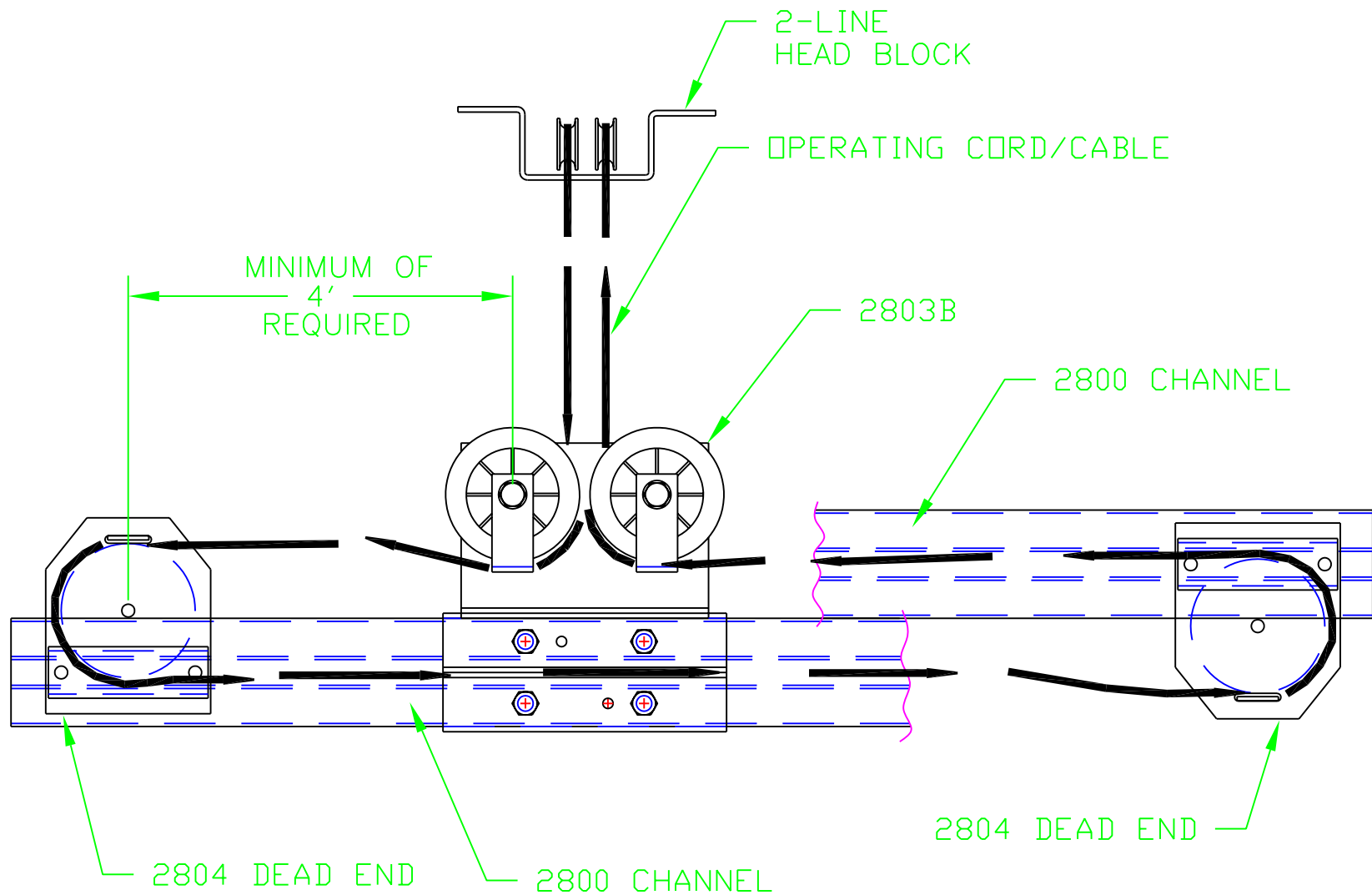
- ① - 2800 CHANNEL
- ② - 2802 MASTER CARRIER (2850,2852)
- ③ - 2801 SINGLE CARRIER (2849,2851)
- ④ - 2808 HANGING CLAMP
- ⑤ - 2824 SPLICE CLAMP (IF NEEDED)
- ⑥ - 2824 SPLICE CLAMP (IF NEEDED)

(* ,*) DENOTES ALTER-NATIVE COMPONENTS

AUTOMATIC DEVICES COMPANY 2121 S. 12TH ST. ALLENTOWN, PA 18103				
THIS DRAWING HAS BEEN PREPARED AS A SERVICE TO OUR CUSTOMER AND IS INTENDED ONLY TO BE SUGGESTIVE IN NATURE AND IS NOT TO BE USED AS AN ACTUAL INSTALLATION DRAWING. PREVAILING JOB CONDITIONS AND ACCEPTED PRACTICES MUST BE TAKEN INTO ACCOUNT WHEN THE EQUIPMENT IS INSTALLED.				
SIZE A	DATE 01/05/02	INSTALLATION INSTRUCTIONS		REV
DRAWN BY GAR	APPROVED BY	DESCRIPTION 284 LEG TRACK SUSPENDED SYSTEM		
SCALE NTS	SHEET 1 OF 1	DWG NO. II-284SL-02		



AUTOMATIC DEVICES COMPANY 2121 S. 12TH ST. ALLENTOWN, PA 18103			
THIS DRAWING HAS BEEN PREPARED AS A SERVICE TO OUR CUSTOMER AND IS INTENDED ONLY TO BE SUGGESTIVE IN NATURE AND IS NOT TO BE USED AS AN ACTUAL INSTALLATION DRAWING. PREVAILING JOB CONDITIONS AND ACCEPTED PRACTICES MUST BE TAKEN INTO ACCOUNT WHEN THE EQUIPMENT IS INSTALLED.			
SIZE A	DATE 8/14/02	SERIES 280	
DRAWN BY JEK		APPROVED BY	DESCRIPTION 280 CEILING MOUNT
SCALE NONE	SHEET 1 OF 1		DWG. NO. CAT-280CEIL-02



TOP VIEW

AUTOMATIC DEVICES COMPANY
2121 S. 12TH ST. ALLENTOWN, PA 18103

THIS DRAWING HAS BEEN PREPARED AS A SERVICE TO OUR CUSTOMER AND IS INTENDED ONLY TO BE SUGGESTIVE IN NATURE AND IS NOT TO BE USED AS AN ACTUAL INSTALLATION DRAWING. PREVAILING JOB CONDITIONS AND ACCEPTED PRACTICES MUST BE TAKEN INTO ACCOUNT WHEN THE EQUIPMENT IS INSTALLED.

SIZE A	DATE 06/10/97	CENTER TAKE OFF CABLE ARRANGEMENT	REV
DRAWN BY GAR	APPROVED BY	DESCRIPTION 2803B CENTER TAKE- OFF LIVE END PULLEY IN ACTION	
SCALE 1/4"=1"	SHEET 1 OF 2	DWG NO. A-2803B-97	